

**Only rain in the  
storm drain.**



**City of Arvada**

## **Parking Lot Washing & Power Washing**

**The contents of wash water, generally found on parking lots (oil, grease, heavy metals, etc.) will damage our streams and the aquatic life within them, even when biodegradable cleaners are used.**

**Nearly all discharges into the storm drain system and streams are deemed “Illicit Discharges” and are illegal**

Thank you very much for recognizing the importance of our streams as a valuable natural resource and your help in the protection and improvement of the streams.

**City of Arvada**

For more information call  
720-898-7807 or go on line  
[www.arvada.org](http://www.arvada.org)

The information found on this brochure has been paraphrased from Federal Storm Water documents and the City of Phoenix, AZ Stormwater Management Section.

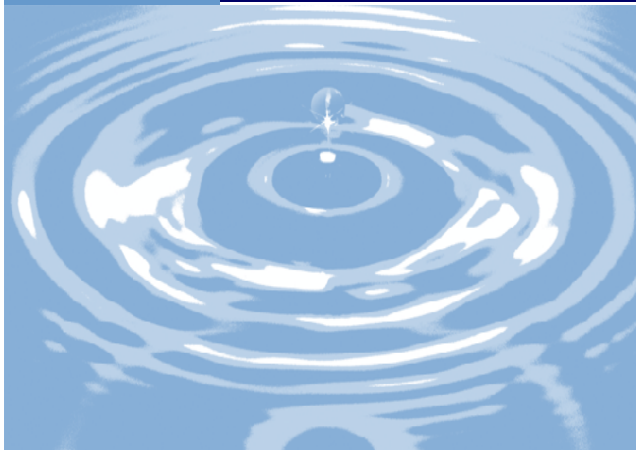
1  
2  
3

## **In Case of a Spill**

1. Stop the source and contain the spill until clean-up is completed.
2. Cover the spill with an absorbent material such as; towels, kitty litter
3. Dispose of clean-up materials properly. If you cannot contain the spill yourself, Call a professional spill cleanup company.

**All wash water must be “ contained and captured” or absorbed into grass, gravel or soil (no wash water leaves the property)**

# PREVENTING STORMWATER CONTAMINATION



## *Parking Lot Washing and Pressure Washing Requirements*

When operating pressure wash equipment for the purpose of washing structures, parking lots, and driveways all individuals must understand that the wash water produced is, in most instances, harmful to the environment and must be disposed of in a drain which routes to a sanitary sewer treatment facility. Storm drains, gutters and ditches drain to the creek and DO NOT drain to a sanitary sewer treatment facility.

### *Training*

- Personnel must be properly trained on chemical use, safety and proper disposal practices.
- Educate employees on proper disposal and handling procedures.
- Train all employees in waste control, disposal, spill and response techniques.
- Ensure all products are sorted, labeled and Material Safety Data Sheets are available in the work area.
- Train all employees about wastewater disposal.

### *General*

- Commercial or industrial wash water is prohibited from entering the storm drain system, street or any other outside area.
- Federal and State Stormwater Regulations require the City to reduce the kinds and amount of pollutants that enter our storm drains and rivers from other sources.
- City Ordinance “Sec. 50-52” Prohibits anything other than naturally occurring stormwater to enter the storm drain system.

### *Best Housekeeping Practices*

- Soapy water remaining in mop or wash buckets should be discharged to the sanitary sewer through a sink, toilet, clean-out or wash area with a drain.
- Routinely sweep, shovel and dispose of litter in the trash.
- Use dry clean-up techniques for chemical or oil spills. (i.e. scatter absorbent on the spill, let it completely absorb then sweep it all up and dispose of it in the trash bin).
- NEVER pour or wash chemicals into the storm drain or street.

### *Drive-ways, Drive-thru and Parking Areas*

- Wash water is **NOT** allowed in the storm drain or street.
- Dry clean oil deposits with absorbent and dispose of the waste in a trash receptacle.
- If using water for cleaning, seal storm drains with an impervious material before washing begins.
- Direct wash water to a sanitary sewer connection or captured and disposed of.

### *Surface Cleaning With Soap*

- Wash water is **NOT** allowed to enter the storm drain, street or any other area outside the property limits.
- Wash water must be directed toward the sanitary sewer or collected and discharged to landfill.
- Using untreated wash water for landscape irrigation is not advised, it may kill plants.
- Seal storm drains with an impervious material before washing begins.
- If wastewater is contained on-site, it must be picked up by an authorized Waste Hauler.

### *Surface Cleaning Without Soap*

- Wash water is **NOT** allowed in the storm drain or street.
- Before washing begins, sweep, shovel and dispose of debris in the trash.
- Direct wash water to landscape or sanitary sewer.
- Seal all storm drains with a fabric filter to collect dirt and debris.
- Clean all equipment in a contained area or inside do not hose waste down the storm drain, street or parking lot.
- Keep all areas clean and free of spill hazards.
- If using water for cleaning, seal storm drains with an impervious material before washing begins.
- Direct wash water to a sanitary sewer connection.

**Only rain in the storm drain.**