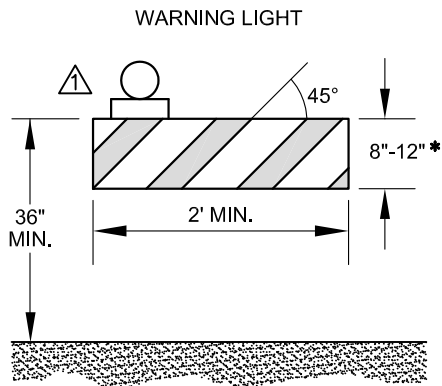
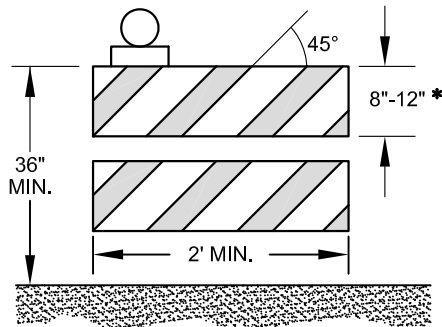


TABLE OF CONTENTS
PART IV – STANDARD DRAWINGS
TRAFFIC CONTROL

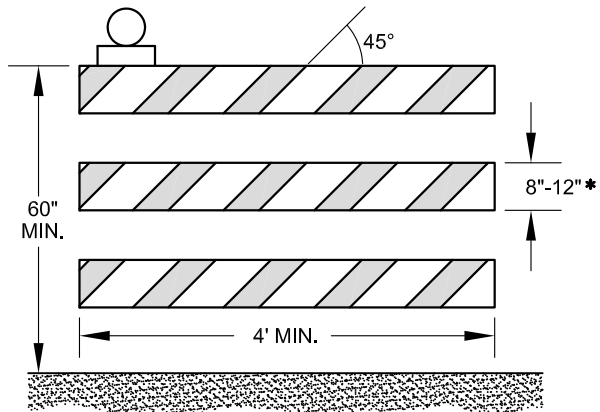
Section No.	<u>Description</u>	<u>Page No.</u>
TC	Barricades & Channelizing Devices	TC-1
TC	Spacing & Taper Length	TC-2
TC	Typical Drawing.....	TC-3
TC	Closure of Right Lane	TC-4
TC	Closure of Left Lane	TC-5
TC	Half Closure of Roadway.....	TC-6
TC	Full Closure of Roadway	TC-7
TC	Lane Closure on Far Side of Intersection.....	TC-8
TC	Lane Closure on Near Side of Intersection.....	TC-9
TC	Closure Right Side of Roadway	TC-10
TC	Closure Left Side of Roadway.....	TC-11
TC	Closure Center of Roadway	TC-12
TC	Complete Closure of Roadway.....	TC-13
TC	Lane Closure with Flagger	TC-14
TC	Shoulder Work	TC-15
TC	Half Closure – Concrete Replacement.....	TC-16
TC	Full Closure – Concrete Replacement	TC-17
TC	Traffic Control – Low Volume Street w/o Centerline.....	TC-18
TC	Traffic Control – Typical Sidewalk	TC-19



TYPE I BARRICADE**

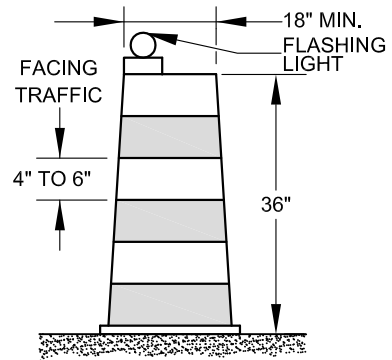


TYPE II BARRICADE**

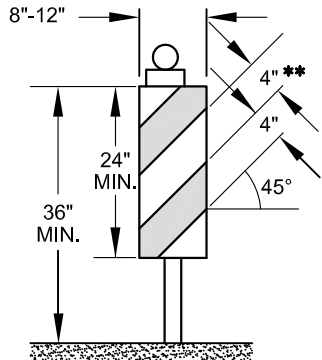


TYPE III BARRICADE**

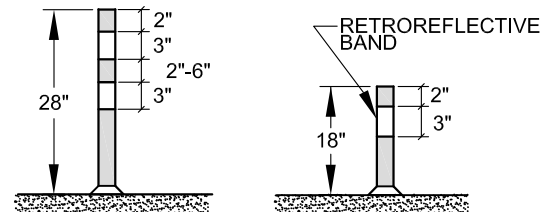
- * NOMINAL LUMBER DIMENSIONS ARE SATISFACTORY FOR BARRICADE RAIL WIDTH DIMENSIONS
- ** RAIL STRIPE WIDTHS SHALL BE 6 INCHES EXCEPT WHERE RAIL LENGTHS ARE LESS THAN 36 INCHES, THEN 4 INCH WIDE STRIPES MAY BE USED. THE SIDES OF BARRICADES FACING TRAFFIC SHALL HAVE RETROREFLECTIVE RAIL FACES.



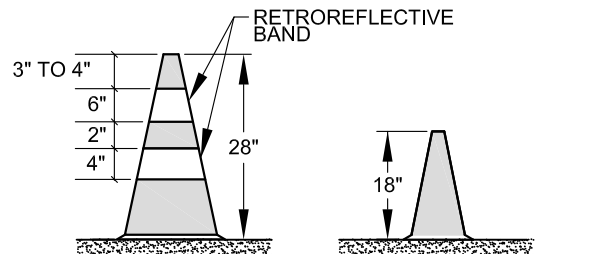
DRUM



VERTICAL PANEL



TUBULAR MARKERS
 DAY USE AND ROADWAY SPEED 45 MPH OR LESS DAY USE AND ROADWAY SPEED 25 MPH OR LESS



CONES
 DAY USE AND ROADWAY SPEED 45 MPH OR LESS DAY USE AND ROADWAY SPEED 25 MPH OR LESS

H:\DWG\ENGR\ENGR Specs DWG\TC-Traffic Control

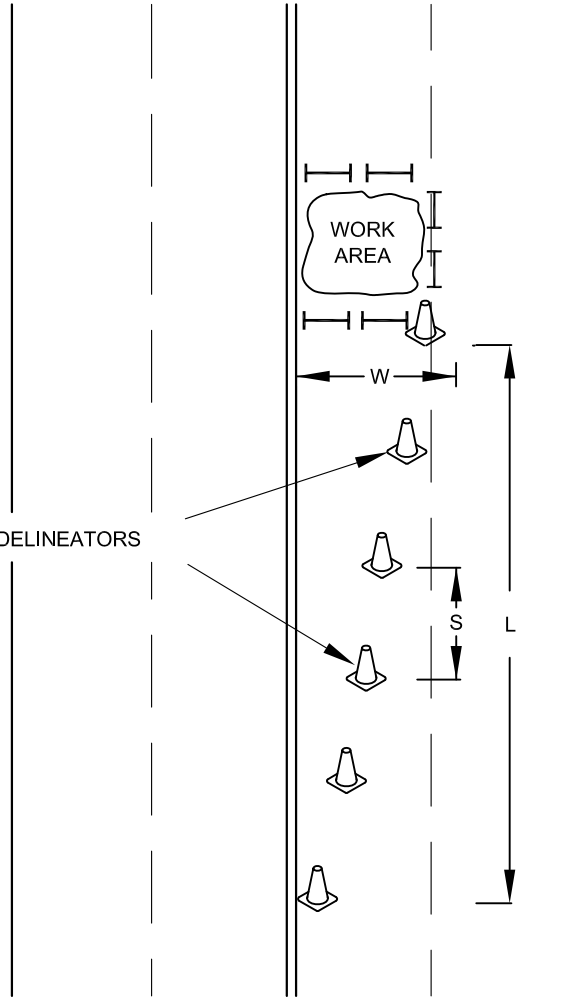
⚠	DDV	3/30/05	CHG. NOTES TO CONES
No.	Dwn.	Date.	Revision



BARRICADES & CHANNELIZING DEVICES

approved *Patrick E. Dougherty P.E.*
 date: 7-11 scale: NTS dwn: D.D.V. sht: 1 of 18

TRAFFIC CONES OR PLIABLE DELINEATORS



SPEED LIMIT	MINIMUM TAPER LENGTH (L) LANE WIDTH			MAXIMUM SPACING (S)
	10'	11'	12'	
25 MPH	105'	115'	125'	25'
30 MPH	150'	165'	180'	30'
35 MPH	205'	225'	245'	35'
40 MPH	270'	295'	320'	40'
45 MPH	450'	495'	540'	45'

H:\DWG\ENGR\ENGR Specs DWG\TC-Traffic Control

No.	Dwn.	Date.	Revision



CITY
of
ARVADA

SPACING & TAPER LENGTH

approved *Patrick E. Dougherty P.E.*
date: 7-11 scale: NTS dwn: D.D.V. sht:

TRAFFIC AND TRANS. DIV. OF PUBLIC WORKS DEPT.

ROAD WORK AHEAD

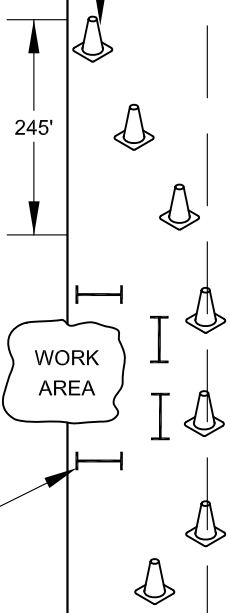
RIGHT LANE CLOSED AHEAD

RIGHT LANE REDUCTION TRANSITION

250'

250'

500'



TYPE I OR II BARRICADES

CONES

END ROAD WORK (OPTIONAL)

END ROAD WORK (OPTIONAL)

SIGN SIZES 36"x36"

START DATE 9-5-95

COMPLETION DATE 9-13-95

1000'

ROAD WORK AHEAD

H:\DWG\ENGR\ENGR Specs DWG\TC-Traffic Control

No.	Dwn.	Date	Revision

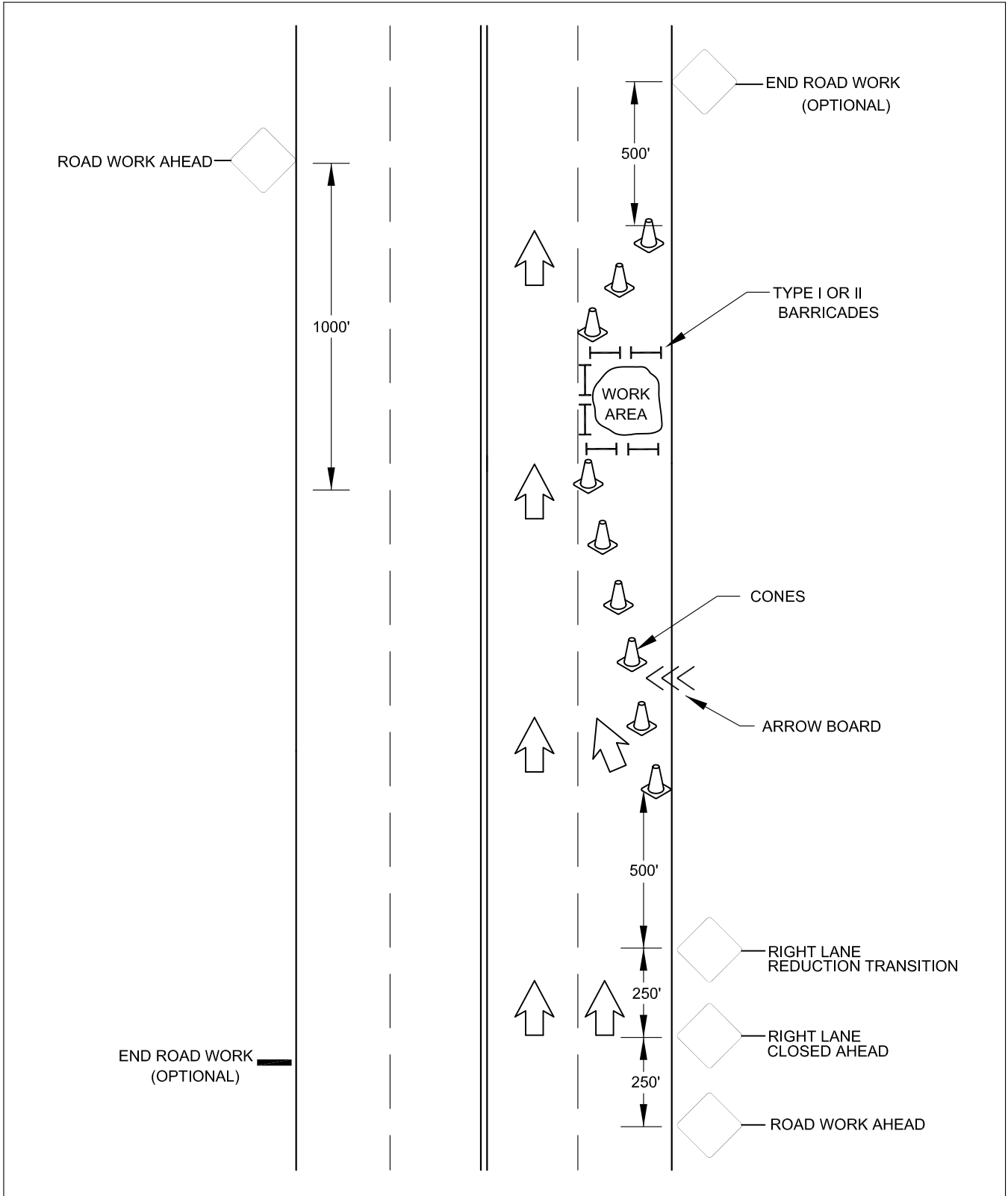


HIGH VOLUME STREET

approved *Patrick E. Dougherty P.E.*

date: 7-11 scale: NTS dwn: D.D.V. sht:

TRAFFIC AND TRANS. DIV. OF PUBLIC WORKS DEPT.



H:\DWG\ENGR\ENGR Specs DWG\TC-Traffic Control

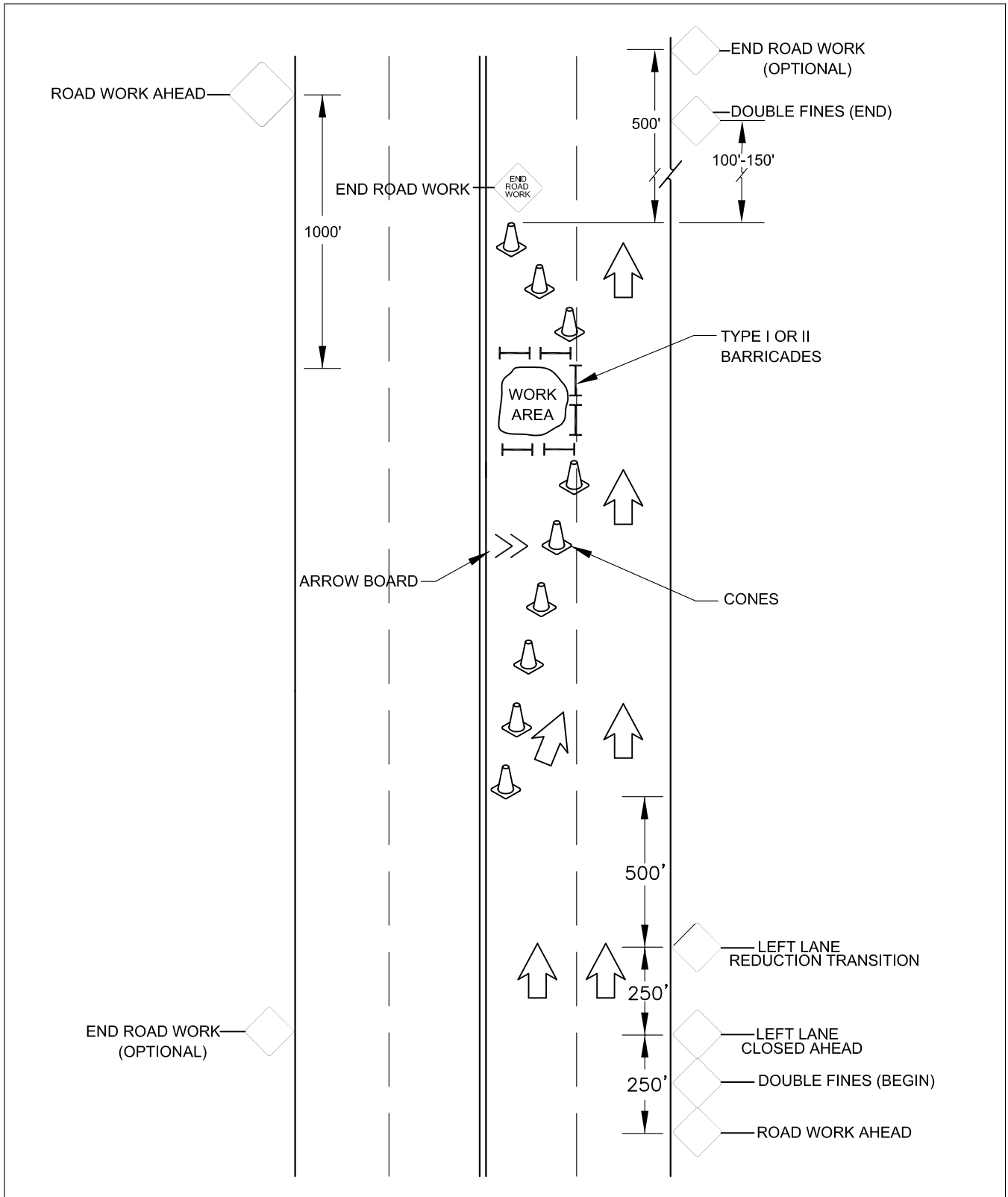
No.	Dwn.	Date	Revision



**CLOSURE OF RIGHT LANE
HIGH VOLUME STREET**

approved *Patrick E. Dougherty P.E.*
 date: 7-11 | scale: NTS | dwn: D.D.V. | sht:

TRAFFIC AND TRANS. DIV. OF PUBLIC WORKS DEPT.



H:\DWG\ENGR\ENGR Specs DWG\TC-Traffic Control

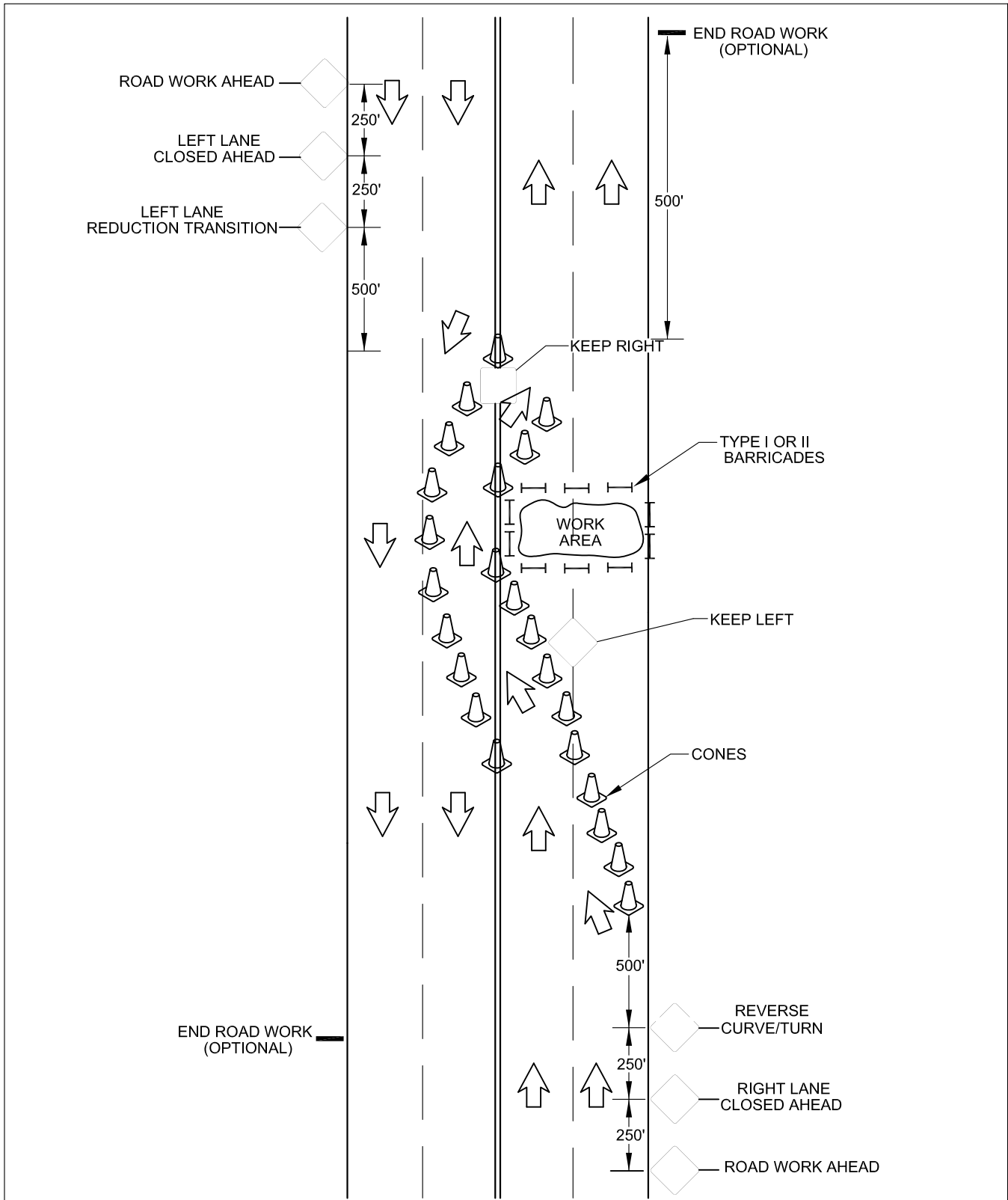
No.	Dwn.	Date	Revision



CLOSURE OF LEFT LANE HIGH VOLUME STREET

approved *Patrick E. Dougherty P.E.*
 date: 7-11 | scale: NTS | dwn: D.D.V. | sht:

TRAFFIC AND TRANS. DIV. OF PUBLIC WORKS DEPT.



H:\DWG\ENGR\ENGR Specs DWG\TC-Traffic Control

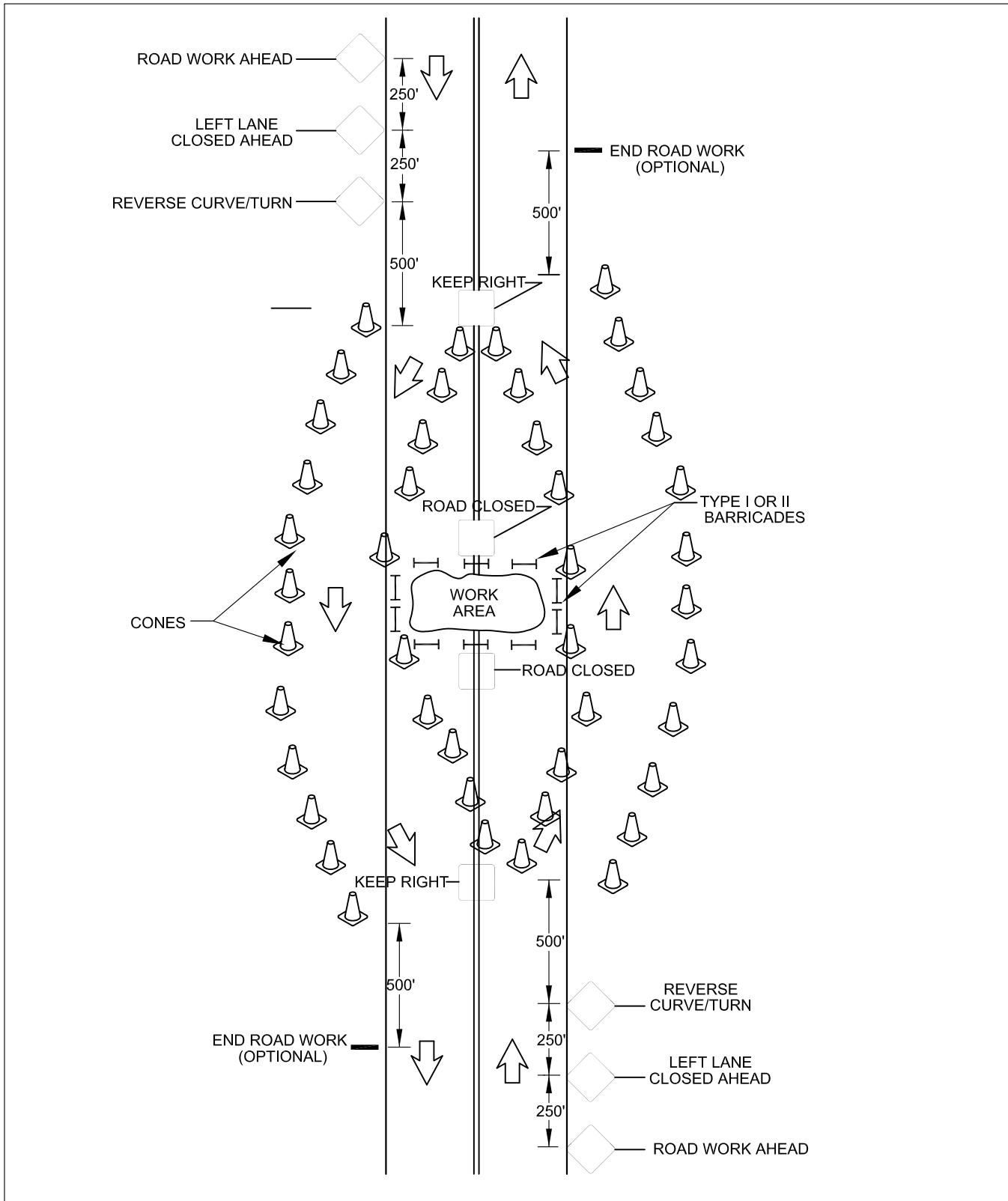
No.	Dwn.	Date	Revision



HALF CLOSURE OF ROADWAY HIGH VOLUME STREET

approved *Patrick E. Dougherty P.E.*
 date: 7-11 | scale: NTS | dwn: D.D.V. | sht:

TRAFFIC AND TRANS. DIV. OF PUBLIC WORKS DEPT.



H:\DWG\ENGR\ENGR Specs DWG\TC-Traffic Control

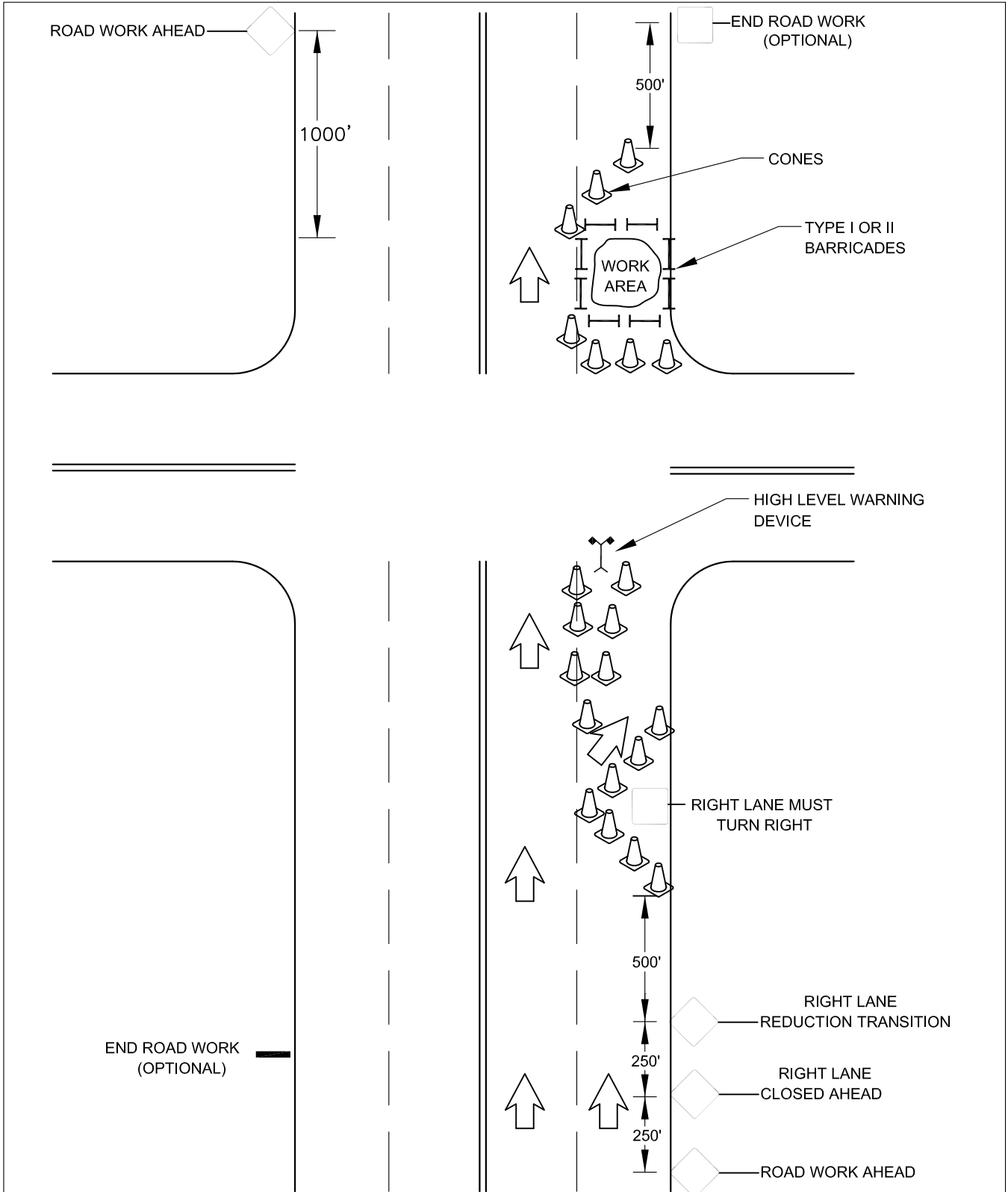
No.	Dwn.	Date	Revision



FULL CLOSURE OF ROADWAY HIGH VOLUME STREET

approved *Patrick E. Dougherty P.E.*
 date: 7-11 | scale: NTS | dwn: D.D.V. | sht:

TRAFFIC AND TRANS. DIV. OF PUBLIC WORKS DEPT.



H:\DWG\ENGR\ENGR Specs DWG\TC-Traffic Control

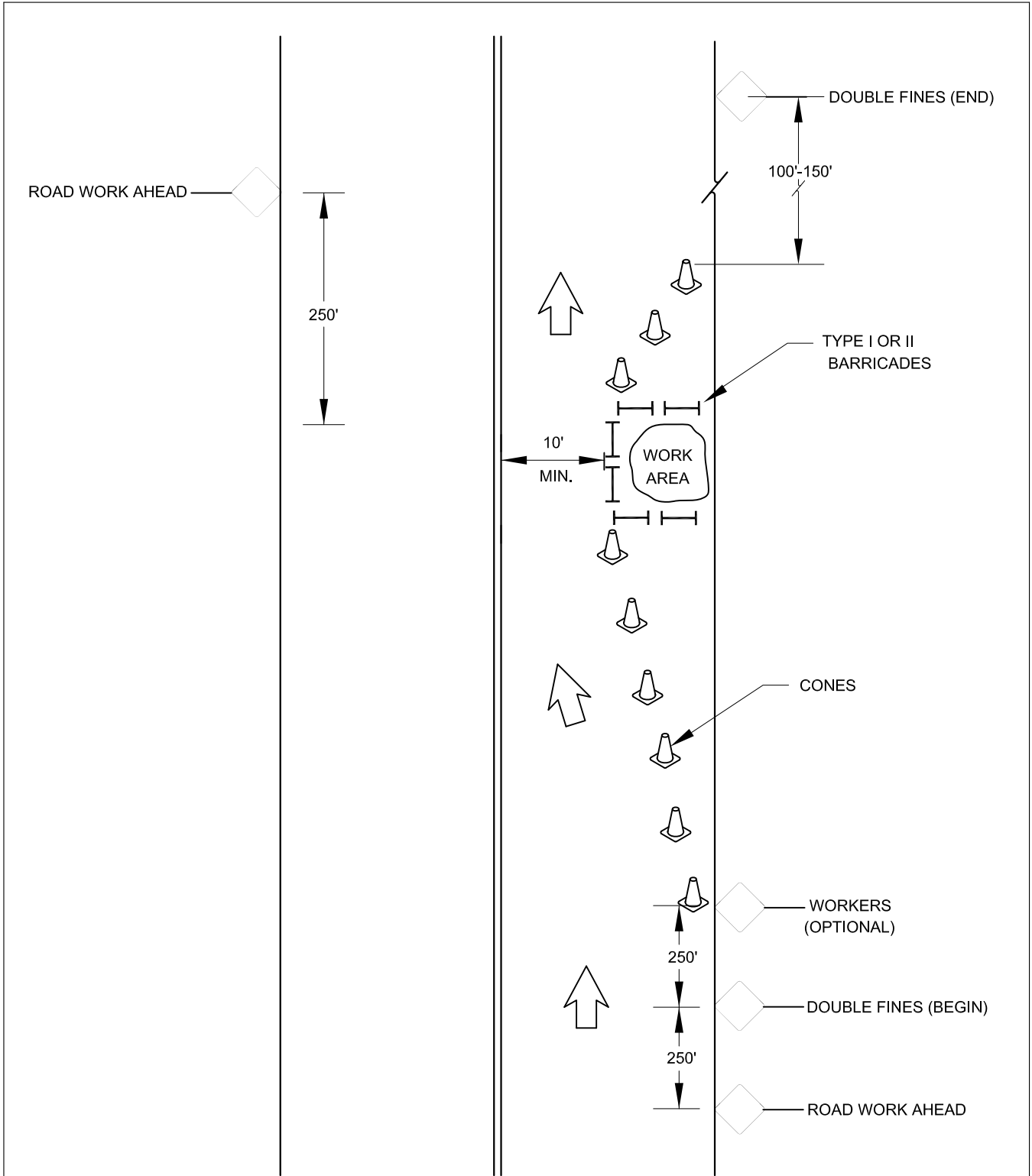
No.	Dwn.	Date	Revision



**LANE CLOSURE ON FAR
SIDE OF INTERSECTION
HIGH VOLUME STREET**

approved *Patrick E. Dougherty P.E.*
 date: 7-11 | scale: NTS | dwn: D.D.V. | sht:

TRAFFIC AND TRANS. DIV. OF PUBLIC WORKS DEPT.



H:\DWG\ENGR\ENGR Specs DWG\TC-Traffic Control

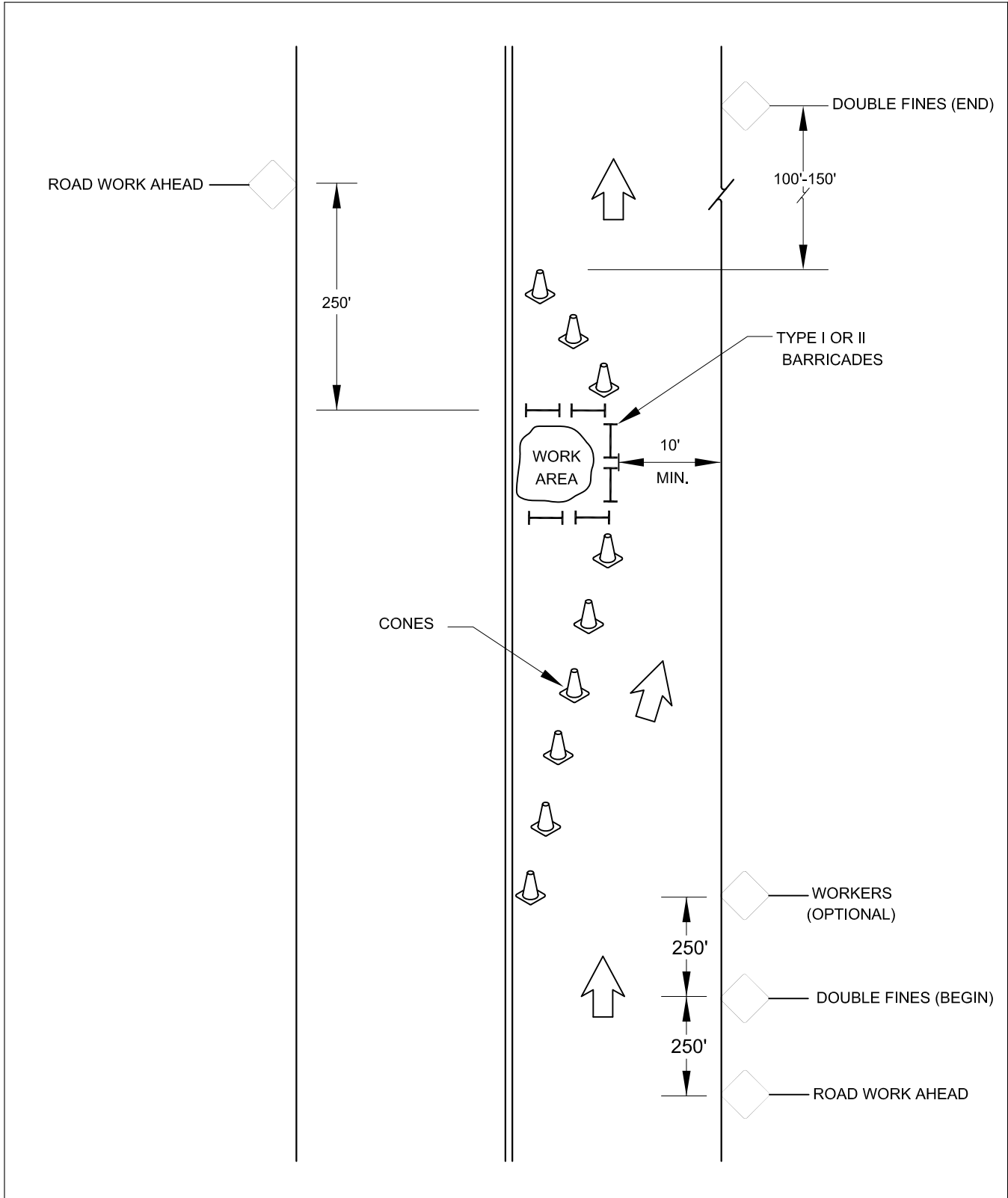
No.	Dwn.	Date	Revision



**CLOSURE RIGHT SIDE OF ROADWAY
LOW VOLUME STREET**

approved *Patrick E. Dougherty P.E.*
 date: 7-11 | scale: NTS | dwn: D.D.V. | sht:

TRAFFIC AND TRANS. DIV. OF PUBLIC WORKS DEPT.



H:\DWG\ENGR\ENGR Specs DWG\TC-Traffic Control

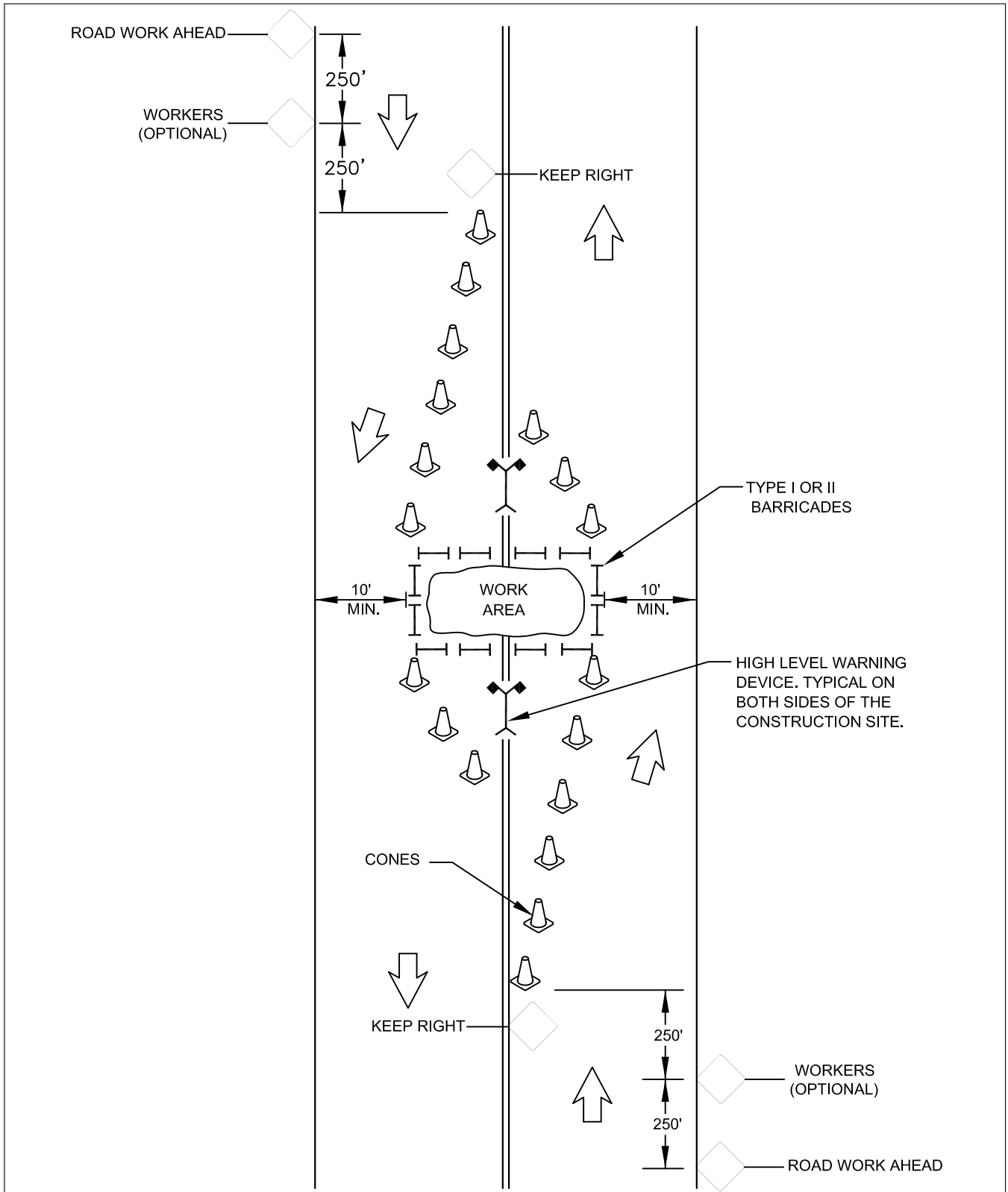
No.	Dwn.	Date	Revision



**CLOSURE LEFT SIDE OF ROADWAY
LOW VOLUME STREET**

approved *Patrick E. Dougherty P.E.*
 date: 7-11 | scale: NTS | dwn: D.D.V. | sht:

TRAFFIC AND TRANS. DIV. OF PUBLIC WORKS DEPT.



H:\DWG\ENGR\ENGR Specs DWG\TC-Traffic Control

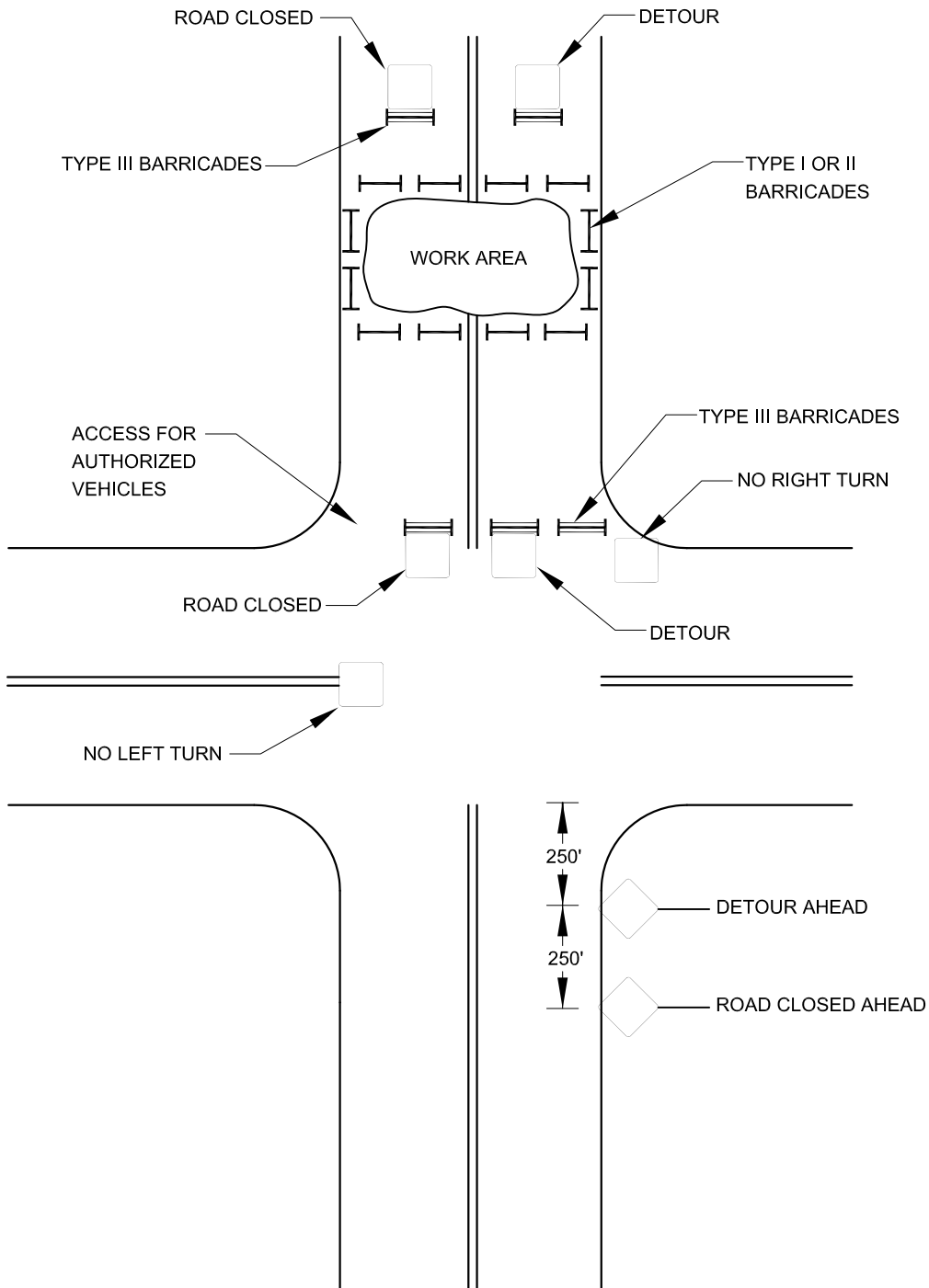
No.	Dwn.	Date	Revision



**CLOSURE CENTER OF ROADWAY
LOW VOLUME STREET**

approved *Patrick E. Dougherty P.E.*
 date: 7-11 scale: NTS dwn: D.D.V. sht:

TRAFFIC AND TRANS. DIV. OF PUBLIC WORKS DEPT.



H:\DWG\ENGR\ENGR Specs DWG\TC-Traffic Control

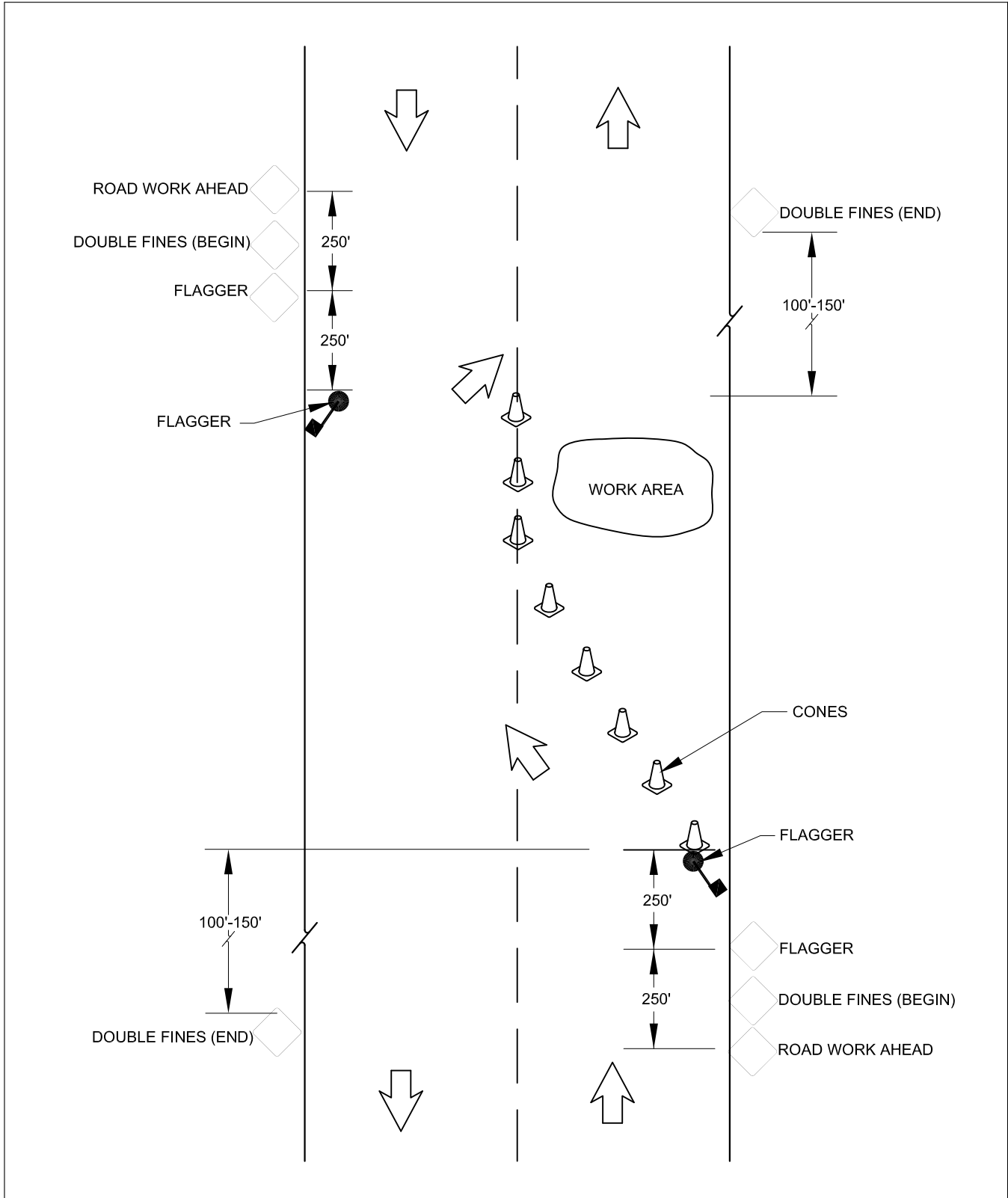
No.	Dwn.	Date	Revision



**COMPLETE CLOSURE OF ROADWAY
LOW VOLUME STREET**

approved *Patrick E. Dougherty P.E.*
 date: 7-11 | scale: NTS | dwn: D.D.V. | sht:

TRAFFIC AND TRANS. DIV. OF PUBLIC WORKS DEPT.



H:\DWG\ENGR\ENGR Specs DWG\TC-Traffic Control

No.	Dwn.	Date	Revision

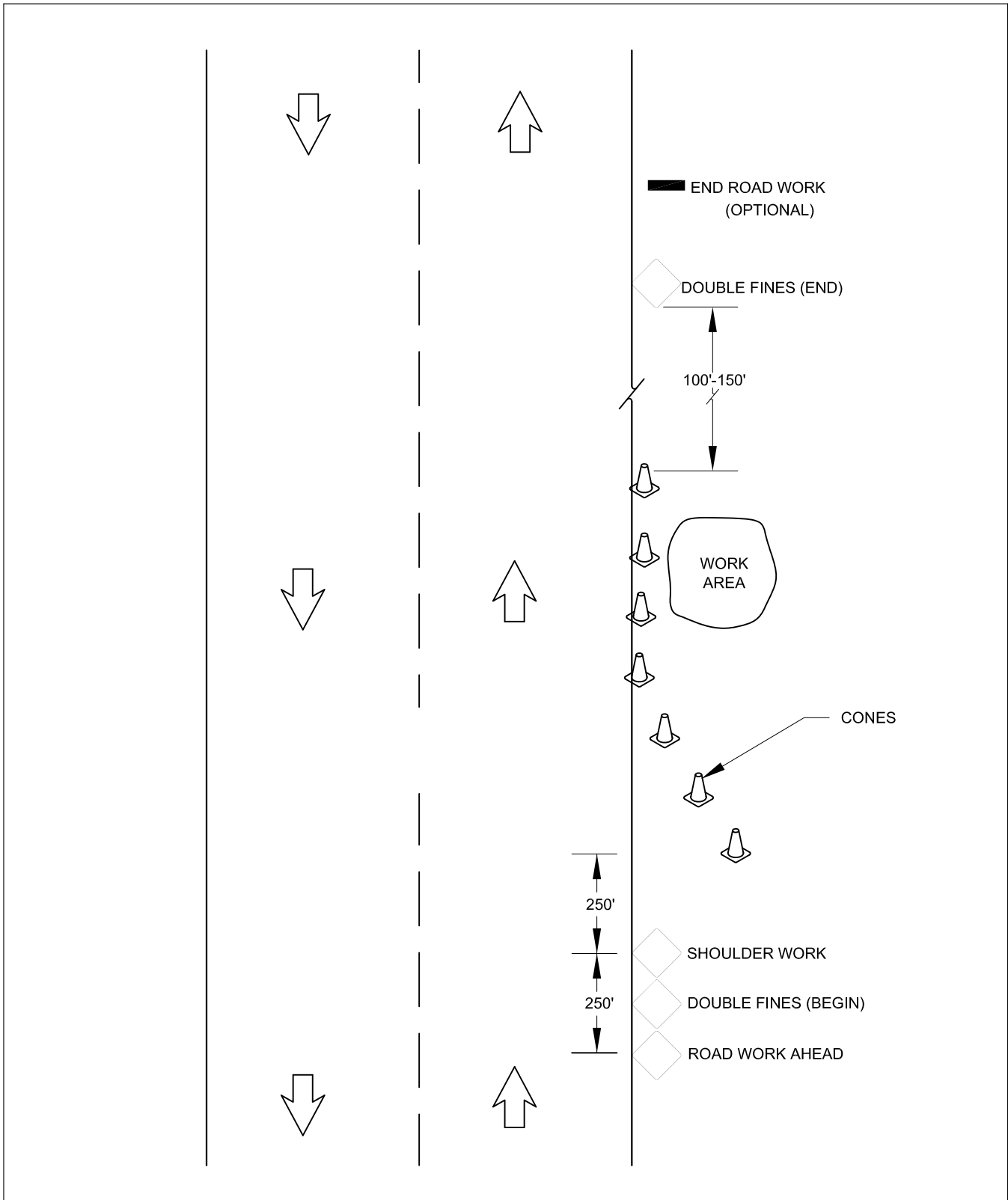


**LANE CLOSURE WITH FLAGGER
LOW VOLUME STREET**

approved *Patrick E. Dougherty P.E.*
 date: 7-11 | scale: NTS | dwn: D.D.V. | sht:

TRAFFIC AND TRANS. DIV. OF PUBLIC WORKS DEPT.

H:\DWG\ENGR\ENGR Specs DWG\TC-Traffic Control



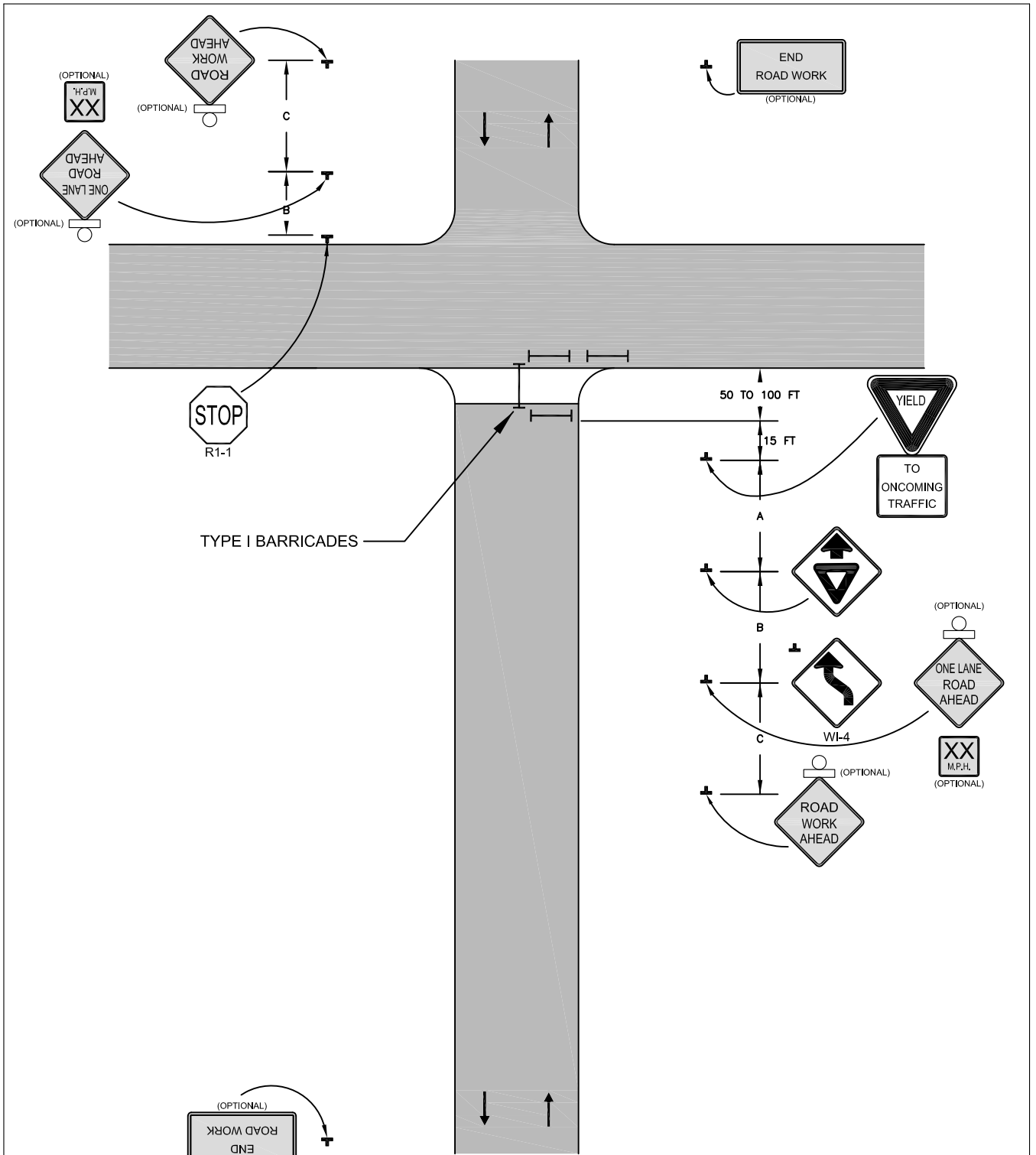
No.	Dwn.	Date	Revision



**SHOULDER WORK
LOW VOLUME STREET**

approved *Patrick E. Dougherty P.E.*
 date: 7-11 | scale: NTS | dwn: D.D.V. | sht:

TRAFFIC AND TRANS. DIV. OF PUBLIC WORKS DEPT.



(OPTIONAL)
END
ROAD WORK

TYPICAL APPLICATION

H:\DWG\ENGR\ENGR Specs DWG\TC-Traffic Control

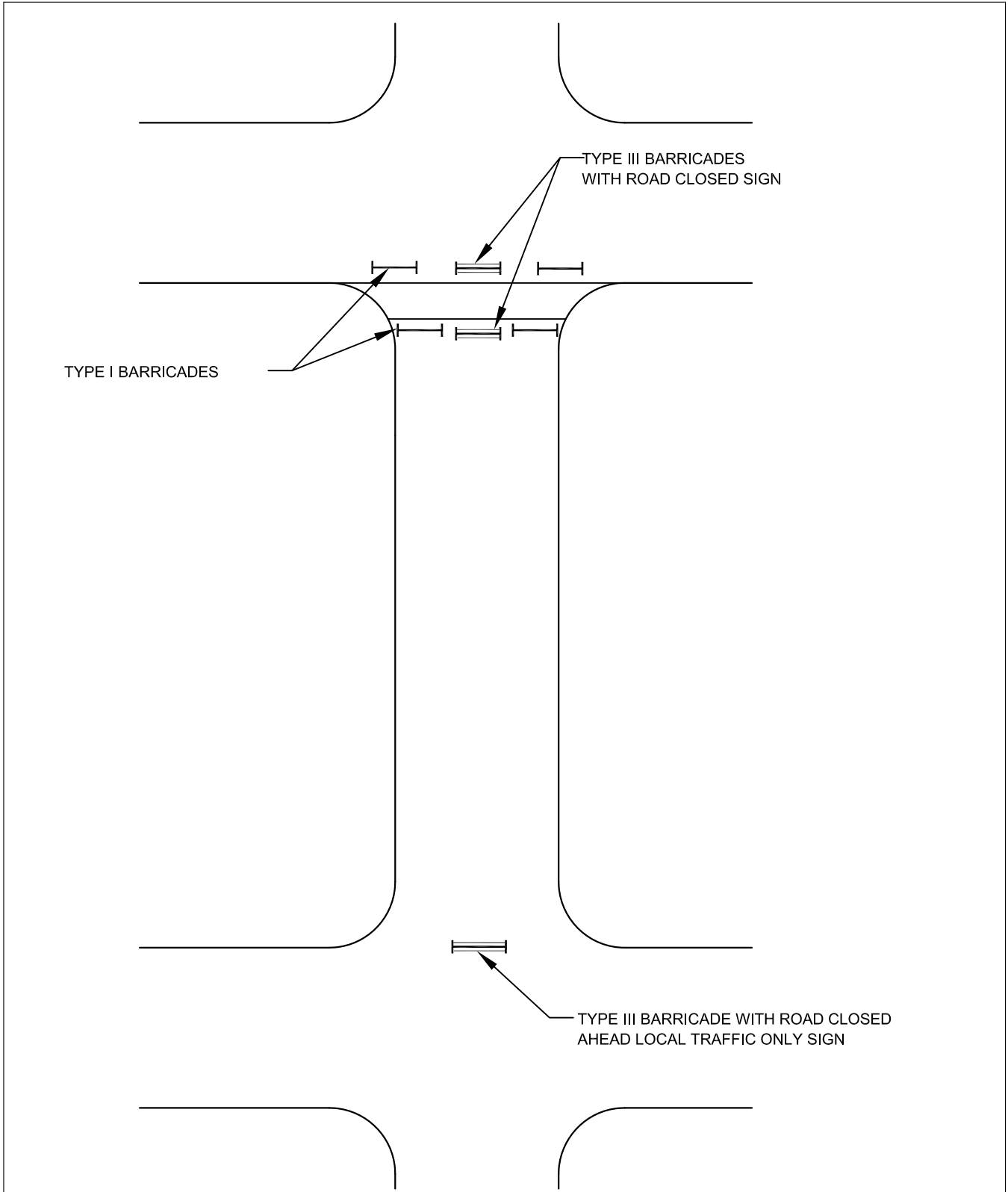
No.	Dwn.	Date	Revision



**HALF CLOSURE - CONCRETE REPLACEMENT
LOW VOLUME STREET**

approved *Patrick E. Dougherty P.E.*
 date: 7-11 | scale: NTS | dwn: D.D.V. | sht:

TRAFFIC AND TRANS. DIV. OF PUBLIC WORKS DEPT.



TYPE I BARRICADES

TYPE III BARRICADES
WITH ROAD CLOSED SIGN

TYPE III BARRICADE WITH ROAD CLOSED
AHEAD LOCAL TRAFFIC ONLY SIGN

H:\DWG\SPCS\TRAFFIC\TC-17.DWG

No.	Dwn.	Date	Revision

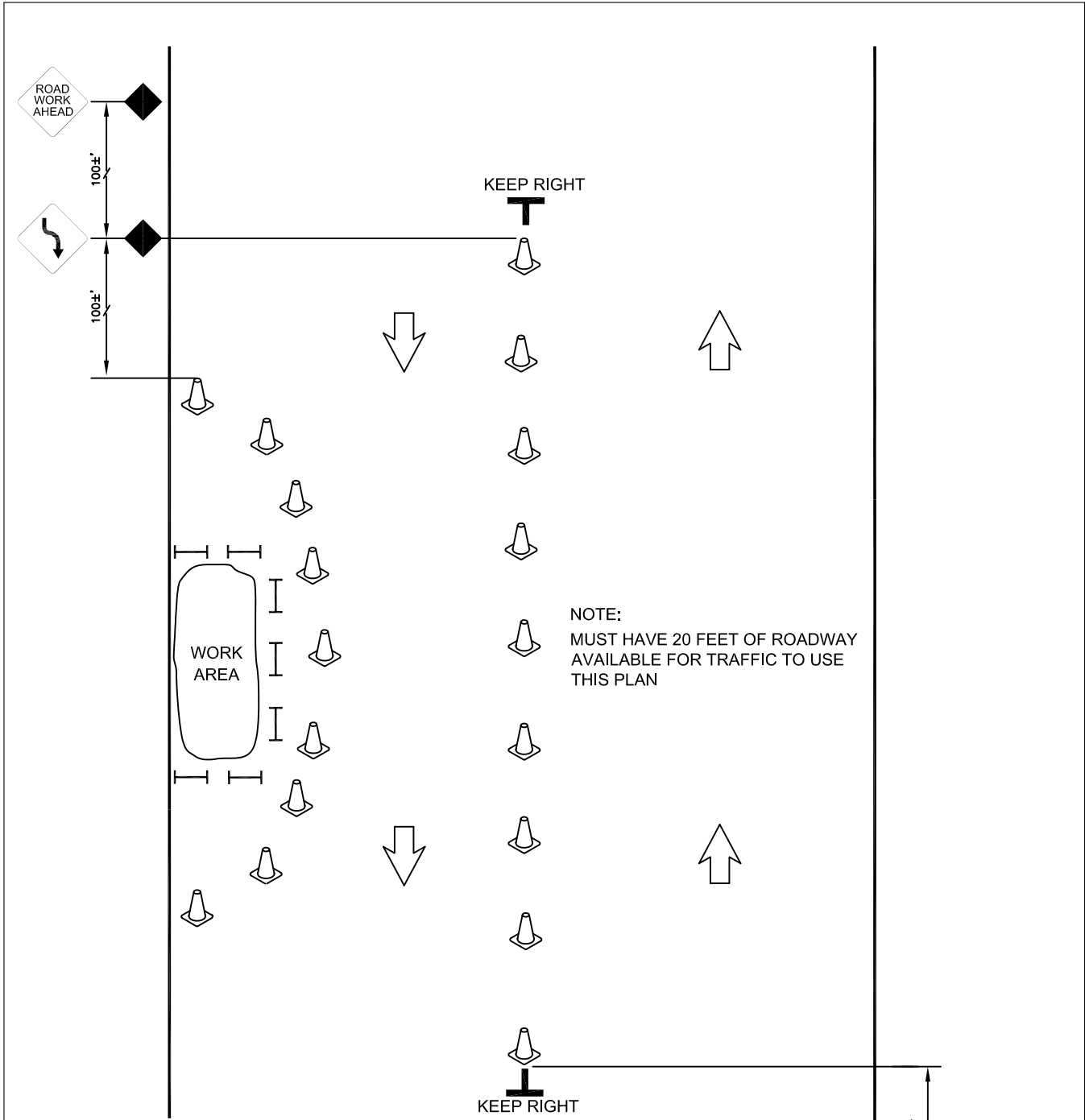


CITY
of
ARVADA

**FULL CLOSURE - CONCRETE REPLACEMENT
LOW VOLUME STREET**

approved *Patrick E. Dougherty P.E.*
date: 7-11 | scale: NTS | dwn: D.D.V. | sht:

TRAFFIC AND TRANS. DIV. OF PUBLIC WORKS DEPT.



NOTE:
MUST HAVE 20 FEET OF ROADWAY
AVAILABLE FOR TRAFFIC TO USE
THIS PLAN

NOTE:
LESS THAN 20' OF CLEAR
ROADWAY, FLAGGERS ARE
REQUIRED.

SPEED LIMIT	MINIMUM TAPER LENGTH (L)			MAXIMUM SPACING (S)
	10'	11'	12'	
25 MPH	105'	115'	125'	25'
30 MPH	150'	165'	185'	30'

H:\DWG\ENGR\ENGR Specs DWG\TC-Traffic Control

No.	Dwn.	Date.	Revision



**TRAFFIC CONTROL
LOW VOLUME STREET
WITH NO CENTERLINE**

approved *Patrick E. Dougherty P.E.*
 date: 7-11 | scale: NTS | dwn: D.D.V. | sht:
 TRAFFIC AND TRANS. DIV. OF PUBLIC WORKS DEPT.

SIDEWALK
CLOSED
PEDS CROSS



SIDEWALK
CLOSED
PEDS CROSS

ROAD WORK AHEAD

H:\DWG\ENGR\ENGR Specs DWG\TC-Traffic Control

No.	Dwn.	Date.	Revision



CITY
of
ARVADA

TRAFFIC CONTROL TYPICAL SIDEWALK

approved	<i>Patrick E. Dougherty P.E.</i>
date: 7-11	scale: NTS dwn: D.D.V. sht:

TRAFFIC AND TRANS. DIV. OF PUBLIC WORKS DEPT.