

Education

Primary Education

Public Schools in Arvada

| | |
|-------------------------------|----|
| Elementary Schools (K-6) | 22 |
| Middle Schools (7-8) | 5 |
| High Schools (9-12) | 4 |
| Charter Schools | 2 |
| Private and Parochial Schools | 5 |

2009 Academic Test Scores

| Group | Reading | Math | Writing |
|---------------|---------|------|---------|
| Jefferson Co. | 580 | 591 | 562 |
| Colorado | 568 | 575 | 555 |
| National | 501 | 515 | 493 |

Source: Jefferson County Public Schools, www.jeffco.k12.co.us

“Dr. Cindy Stevenson, Superintendent of Jeffco Public Schools, was named 2010 Colorado Superintendent of the Year by the Colorado Association of School Executives.”

Four-Year State Supported Colleges and Universities (Denver Metro Area)

| |
|--|
| Colorado School of Mines |
| Metropolitan State College |
| University of Colorado-Boulder |
| University of Colorado-Denver |
| University of Colorado-Anschutz Medical Center |

Private Four-Year Universities

Nine in the Denver Metro Area, selected list of schools with greater than 5,000 students

| |
|----------------------|
| Regis University |
| University of Denver |

Two-Year Colleges

Ten in the Denver Metro Area, selected list of schools with greater than 5,000 students

| |
|-------------------------------|
| Community College of Denver |
| Front Range Community College |
| Red Rocks Community College |

For enrollment information see respective websites.

Arvada, Colorado at a Glance

| | |
|---------------------|---------|
| Population | 107,702 |
| Median Age | 39.4 |
| Household Units | 44,335 |
| Land Area (sq. mi.) | 35.8 |

“Arvada’s strong civic leadership supports business and economic development.”

Arvada Highlights

- Pro-business environment
- Nationally recognized business retention program
- Home to one of Colorado’s wealthiest zip codes
- Extraordinary trail system
- 77 parks
- 3 golf courses
- 35 multi-purpose sports fields

Colorado Highlights

- Ranked as 4th best State for overall business – *Forbes*, 2009
- Ranked 4th State for renewable energy and energy research employment
- DIA is the 10th busiest airport in the world
- 300+ days of sunshine
- Ski and golf in the same day
- Ideal for a healthy lifestyle

Location/Transportation

- Minutes from Denver International Airport, downtown Denver business district, the Denver Tech Center, and mountain communities
- Conveniently located near several world-class universities and research institutions
- Charming, historic downtown offers eclectic shopping and dining with plans for a future “FasTracks” light-rail stop
- Rocky Mountain Metropolitan Airport is a designated customs office open 24 hours daily



Parks and Recreation

Within the city limits: 69 neighborhood parks; 3 golf courses; 5 community parks; 7 sports complexes; 4 special purpose parks (dog park, disc parks & equestrian center); 47 playgrounds; 41 tennis courts; 35 baseball/softball/soccer fields (multipurpose sports fields); 11 recreation centers and city centers; 2 skatepark facilities; 38 undeveloped open space areas; Two Ponds, National Wild Life Refuge, Majestic View Nature Center, and 600 developed/landscaped/improved acres.

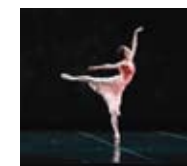
Jefferson County

| | |
|-----------------------|--------|
| Parks & properties | 31 |
| Total miles of trails | 202 |
| Total acres acquired | 51,819 |
| Total acres managed | 40,350 |

Colorado

| | |
|--|-----|
| National forests | 13 |
| National parks, monuments, recreational areas, and historic sites and trails | 15 |
| Wilderness areas | 54 |
| State parks | 57 |
| Mountain peaks 14,000+ feet | 58 |
| Public/private golf courses | 238 |
| Winter recreational areas | 43 |
| Ski resorts | 28 |

Arts and Culture



The Arvada Center for the Arts & Humanities is one of the largest multi-disciplinary art and cultural centers in the country. The center also includes a banquet facility for corporate and social gatherings.

Seasons and Climate

Arvada has a semi-arid, four season climate with mild temperatures and 300+ days of annual sunshine.



| | |
|-----------------------|-----------------------------|
| Coldest Month | January, 42 degrees average |
| Warmest Month | July, 88 degrees average |
| Average Humidity | 40% |
| Average Precipitation | 15.81 inches |

Labor Force

2009 Annual Average Labor Force Statistics (as of December, 2009)

| | Total Labor Force | Employed | Unemployed | Unemployment Rate |
|-------------------|-------------------|-----------|------------|-------------------|
| Jefferson County | 307,171 | 285,494 | 21,678 | 7.1% |
| Adams County | 224,709 | 205,418 | 19,291 | 8.8% |
| Denver-Aurora MSA | 1,380,519 | 1,276,830 | 103,689 | 7.5% |
| Colorado | 2,698,176 | 2,501,366 | 196,810 | 7.5% |

Source: Colorado Department of Labor and Employment, Labor Market Information.

Average Hourly Wages for Selected Occupations

Denver MSA Average Hourly Wages For Selected Occupations

| Management | Avg. Hr. Wage | Trade/Manufacturing | |
|-------------------------------|---------------|---------------------|----------|
| Construction Manager | \$ 43.11 | Electrician | \$ 22.51 |
| Engineering Manager | \$ 58.72 | Machinist | \$ 17.62 |
| Financial Manager | \$ 56.90 | Welder/Cutter | \$ 17.88 |
| Industrial Production Manager | \$ 42.69 | | |

| Professional | | Office/Assistant | |
|-----------------------------|----------|---|----------|
| Accountant and Auditor | \$ 32.83 | Bookkeeping, Accounting, & Auditing Clerk | \$ 17.36 |
| Biomedical Engineer | \$ 39.83 | Executive Secretary | \$ 21.48 |
| Civil Engineer | \$ 37.37 | Word Processor & Typist | \$ 17.63 |
| Computer Programmer | \$ 38.92 | | |
| Computer Support Specialist | \$ 24.94 | | |
| Electrical Engineer | \$ 39.48 | | |
| Environmental Engineer | \$ 41.85 | | |
| Mechanical Engineer | \$ 46.51 | | |

Employment

| Among Major Employers | Product/Service |
|----------------------------------|------------------------------|
| Barber-Nichols, Inc. | Aerospace/commercial |
| CCW Products | Manufacturing |
| Costco | Retail/grocery |
| Home Depot | Retail/hardware |
| Industrialex Manufacturing Corp. | Industrial coating |
| Kohl's | Retail |
| New York Life Insurance Company | Insurance |
| Piper Electric Co., Inc. | Electrical contractor |
| PrimeStar Solar | Solar/manufacturing |
| Sartorius TCC Company | Precision instruments |
| Sorin Group USA, Inc. | Medical device/manufacturing |
| Sundyne Corporation | Manufacturing |
| Sunflower Market | Retail/grocery |
| Swinerton Builders | Construction |



ARVADA
ECONOMIC DEVELOPMENT ASSOCIATION

8101 Ralston Road • Arvada, Colorado 80002 • 720.898.7010 • www.aeda.biz

Photo credits: Arvada Center for the Arts and Humanities, Barber-Nichols, Inc., City of Arvada/KATV, Denver International Airport, Jeffco Public Schools, Justin Sagarsee/Arvada Press, L. Kingston, Piper Electric Co. Inc., WANCO, Inc.

Arvada



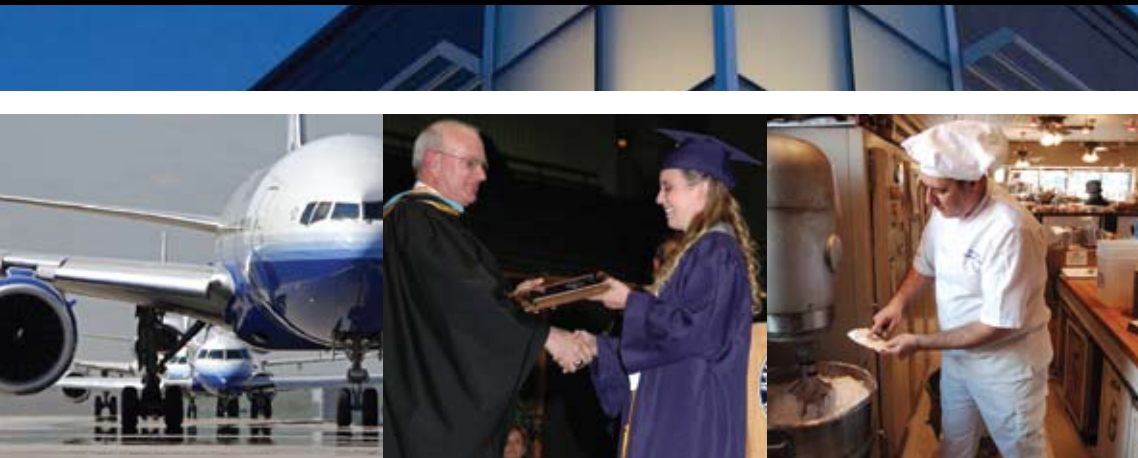
COLORADO

2010
ARVADA COMMUNITY PROFILE



“Colorado is the second most highly educated State.”

U.S. Census Bureau, American Community Survey, 2009



Colorado ranked first for state labor prospects, second for growth prospects, fifth for its economic climate ranking and fourth best State overall for business. Forbes, 2009

2010

Safety

Arvada Police Department

- First city in Colorado and 13th in the nation to have its police department accredited through the Commission on Accreditation for Law Enforcement Agencies (CALEA). First police department in Colorado to be accredited for the seventh time.
- Staffed by 242.5 positions, including 166 sworn officers.
- Officers possess a four-year degree from an accredited university.
- Received CALEA's Flagship Award. This designation is bestowed upon a law enforcement organization demonstrating compliance of CALEA's standards in an exemplary fashion. (First Colorado police department to achieve this milestone.)
- Through contemporary policing practices, the department strives to reduce crime related issues making Arvada a great place to live and to do business.

Arvada Fire Protection District

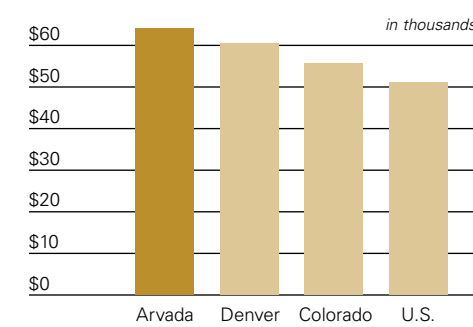
- Operates eight active stations strategically placed throughout a 41 square mile area staffed by career, volunteer, and reserve firefighters.
- Maintains a Class 3 Insurance Service Office (ISO) rating, which has a positive effect on commercial and residential property insurance rates within the Fire District.
- District personnel provide training and services for fire suppression, basic and advanced life support; specialized rescue operations, and hazardous materials mitigation; medical direction prior to the arrival of emergency personnel; inspections, fire investigations, fire education and public information; and support for all fire district operations.

Cost of Living

| City | All Items Index* | Grocery | Housing | Utilities | Transportation | Health Care | Goods & Services |
|-------------------|------------------|---------|---------|-----------|----------------|-------------|------------------|
| Boston, MA | 130.6 | 118.6 | 146.7 | 147.8 | 100.9 | 125.7 | 126.4 |
| Boulder, CO | 126.2 | 103.0 | 186.1 | 94.6 | 99.6 | 108.0 | 103.6 |
| Dallas, TX | 91.0 | 98.2 | 69.7 | 106.2 | 96.1 | 102.4 | 99.5 |
| Denver, CO | 104.3 | 99.4 | 106.6 | 105.0 | 96.5 | 105.4 | 106.4 |
| Los Angeles, CA | 140.7 | 106.6 | 224.5 | 93.2 | 116.3 | 109.2 | 106.0 |
| Phoenix, AZ | 96.3 | 102.1 | 90.1 | 88.8 | 106.7 | 98.4 | 98.0 |
| Portland, OR | 113.6 | 113.3 | 129.3 | 92.8 | 109.0 | 108.0 | 108.5 |
| San Francisco, CA | 162.9 | 118.1 | 271.1 | 91.4 | 111.9 | 120.7 | 128.3 |
| Seattle, WA | 121.7 | 118.2 | 147.4 | 85.9 | 114.5 | 122.8 | 113.6 |
| Washington, DC | 138.5 | 115.1 | 218.9 | 101.9 | 107.1 | 103.2 | 102.5 |

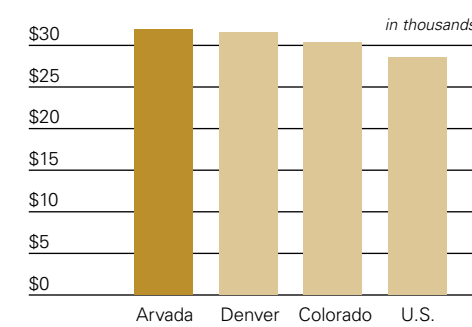
*Index measures relative price levels for consumer goods and services in selected cities with the national average of 100 for all participating cities. Source: ACCRA, Cost of Living Index, 2009 3rd Quarter Data.

Median Household Income



Source: U.S. Census Bureau, American Community Survey for 2008 (all figures are in 2008 inflation-adjusted dollars).

Per Capita Income



Arvada Housing Statistics

| | |
|--|-----------|
| Total Arvada residential units | 44,335 |
| Average detached home price | \$264,803 |
| Average attached home price | \$159,628 |
| Average monthly rent/2 bedroom, 1 bath | \$788 |

Arvada Commercial Statistics

| Price per square foot | |
|------------------------|------------------|
| Retail lease rates | \$6.49 - \$26.00 |
| Average | \$15.14 |
| Office lease rates | \$8.00 - \$21.92 |
| Average | \$15.24 |
| Industrial lease rates | \$4.75 - \$8.12 |
| Average | \$6.45 |
| **Land cost | \$2.39 - \$21.19 |

Source: Frederick Ross Company/ONCOR Int'l 2009
** www.ArvidaPropertyLink.com



Workforce/Business Resources

The Colorado FIRST Customized Training Program is a statewide job training program that provides funding to companies relocating or expanding in Colorado. **For more information check out www.AdvanceColorado.com**
Jefferson County Workforce Center offers employment assistance for businesses and individuals. **For more information visit www.jeffcworkforce.org**

The Jefferson County Business Resource Center provides startup assistance and business resources for growing companies in Jefferson County, Colorado. **For more information visit www.jeffcobrc.org**

The City of Arvada offers "Ask Arvada", a customer friendly online system providing services, information, and answers to frequently asked questions (FAQs) 24/7. **For more information log onto www.arvada.org**

Tax Features

| | |
|--|--------------|
| Arvada Sales Tax Rate: | 3.46% |
| • No Arvada sales or use tax on manufacturing equipment* | |
| • No Arvada sales or use tax on R&D equipment* | |
| • No head/occupational tax | |

*Used exclusively and directly in the manufacturing process for wholesale sales or on research and development equipment with certain dollar values.

Total Sales Tax Rates:

| | |
|------------------------------------|-------|
| (Includes City, County, and State) | |
| Jefferson County | 8.06% |
| Adams County | 8.31% |

2009 Fiscal Year Retail Sales, \$1,152,828,294

The Invest In Arvada initiative was introduced by the City of Arvada and Arvada Economic Development Association (AEDA) to emphasize the importance of shopping local.



Property Tax Rate: 4.31 mill levy

Arvada Enterprise Zone – State Income Tax Credits

- 3% Investment tax credit for equipment purchased and used within the zone
 - 3% of increased expenditures for Research & Development tax credit
 - \$500/New full-time employee tax credit
 - \$200/New full-time employee/two-year health insurance tax credit
 - 10% Qualified job training tax credit
 - 12.5% - 25% contributions tax credit
- Subject to pending legislation

Utility Rates

The City of Arvada provides water and sewer services.

For rates for commercial, residential, or stormwater; water system capacity, or for further information, visit www.arvada.org/about-arvada, or contact Public Works and Utilities at 720-898-7760.

Electric and Gas Service

The City of Arvada is serviced by Xcel Energy. For rate information, visit www.xcelenergy.com, or contact Xcel Energy at (800) 481-4700.

| | |
|--------------------------------------|-------|
| Colorado Tax Rates: | |
| Colorado Corporate Income Tax Rate: | 4.63% |
| Colorado Individual Income Tax Rate: | 4.63% |
| Colorado Sales Tax Rate: | 2.9% |

Colorado Sales Tax Exemptions

- Machinery and tools used in manufacturing
 - Ingredients used in manufacturing or processing
 - Groceries
 - Sales to governmental units
 - Prescription drugs, eyeglasses, some medical devices
- Subject to pending legislation

“Arvada is recognized for its award winning business retention program.”



Air Service

Denver International Airport (DIA)

DIA is one of the world's most modern and efficient airports. The \$4.2 billion facility encompasses 53 square miles, located about 40 minutes from Arvada. Opened in 1995, DIA is the only major airport built in the U.S. in the past 25 years. The current facility can accommodate over 51.2 million passengers annually, ranking the airport as the fifth busiest in U.S., and the 10th busiest in the world based on total passenger counts.

- 40 minute non-stop drive on I-70 from Arvada
- Six runways: Five 12,000 ft. and one 16,000 ft.
- Three airside concourses
- 111 gates
- More than 30 commercial carriers serve over 140 domestic and international destinations
- Nine cargo airlines and 19 major and national airlines provide cargo services
- 140,398 passengers per day (average)
- 1,789 flights per day (average arrivals and departures)

FasTracks Program

The RTD FasTracks Program is a \$6.9 billion, 12-year program building 122 miles of new commuter rail and light rail, 18 miles of bus rapid transit, 21,000 new parking spaces at rail and bus stations, and will provide expanded bus service through the eight county district. After more than three years of in-depth alternatives screening, detailed impact analysis, and extensive community outreach, the RTD FasTracks Gold Line project was approved by the Federal Transit Administration (FTA). The 11.2 mile long Gold Line is proposed to run along the Burlington Northern/Sante Fe and Union Pacific railroad route from Denver Union Station to neighboring communities, passing through Arvada, with 3 of 7 stations near Sheridan Boulevard, in Olde Town Arvada, and near Arvada Ridge.

Proposed Jefferson Parkway

The Jefferson Parkway, when finished, will for the first time allow the Denver Metropolitan beltway to operate as a complete highway transportation system.

The beltway was recently approved by the DRCOG Board of Directors and is pending further approval from the Colorado Department of Transportation.

Major Interstate Highways

I-70 is a major coast-to-coast, east-west artery, and is positioned mid-way between Canada and Mexico. I-76 heads from Denver toward the northeastern U.S. I-25 is a major north-south transportation route connecting Canada and Mexico.

International Connection

Arvada's location offers one-bounce satellite uplinks to world satellite networks and real-time connections to six out of seven continents in one business day. Arvada is located just minutes away from Denver, and is in the Mountain Time Zone. Its central location in the U.S. provides easy communication with both east and west coasts, and allows the opportunity to talk to both Europe and the Far East in the same business day.

Rocky Mountain Metropolitan Airport (RMMA)

RMMA, formerly known as the Jefferson County Airport, is Denver's premier corporate reliever. It is situated between downtown Denver and Boulder on U.S. Interstate 36. RMMA offers an Instrument Landing System and a user-free designated Customs Office available 24 hours a day.

- Two fixed base operators
- 167,000 departures and arrivals
- 1,700 acres
- Three runways – 3,600 ft., 7,500 ft., and 9,000 ft.



“FasTracks is the largest simultaneous construction of a mass transit system in U.S. history.”

– American Public Transportation Association

Freight and Ground Service

Package Service

UPS, FEDEX, USPS, and Greyhound provide one-day service to anywhere in the U.S.

Truck Service

Over 782 trucking transportation companies in the Denver Metro area

Bus Service

- Seven inner-city commercial bus companies
- Regional Transportation District (RTD) 74 park-n-Ride facilities

Rail Service

- | | |
|-----------------------|--|
| Passenger | Amtrak |
| Freight | Burlington Northern/Sante Fe Railway, and Union Pacific Railroad |
| Gold Line | Scheduled 2016 completion will connect Denver, Arvada, and Wheat Ridge |
| Light Rail/Bus | Regional Transportation District (RTD), funded by a one percent sales tax, operates 1,039 buses on 165 fixed routes and 117 light rail vehicles on 35 miles of track |