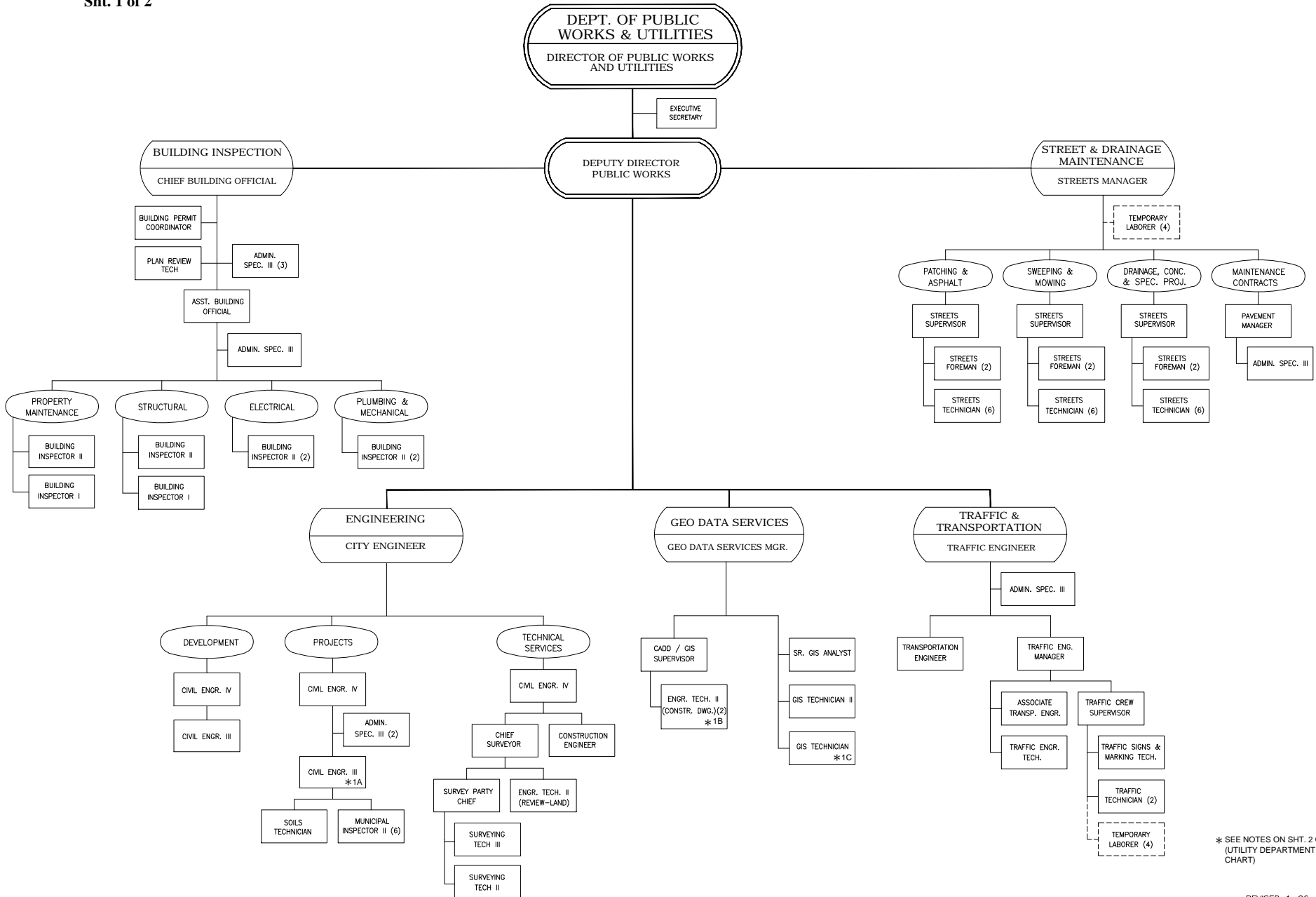
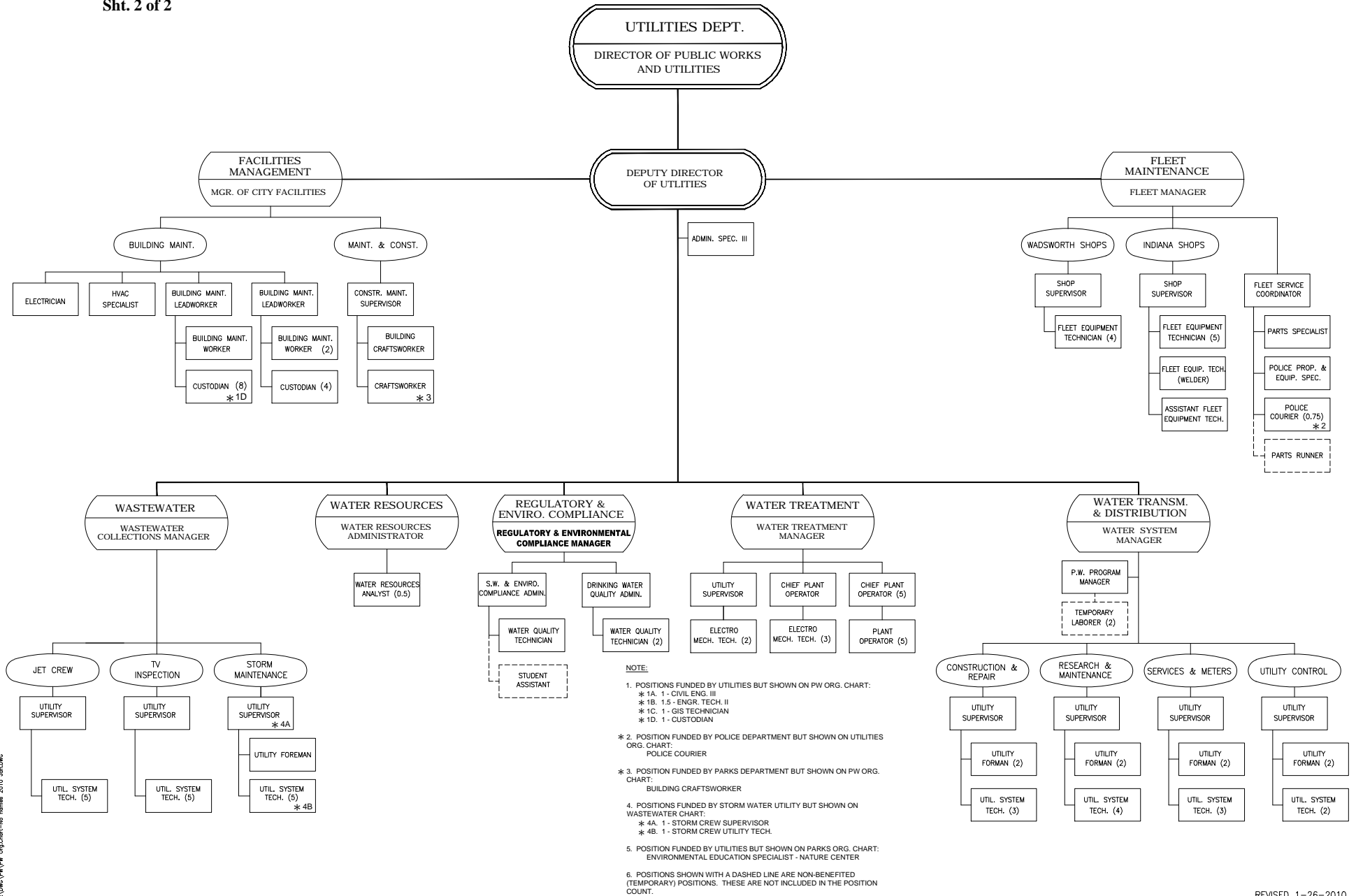


Public Works and Utilities Department
Organizational Chart
Sht. 1 of 2



* SEE NOTES ON SHT. 2 OF 2 (UTILITY DEPARTMENT ORG. CHART)

Public Works and Utilities Department
Organizational Chart
Sht. 2 of 2



NOTE:

- POSITIONS FUNDED BY UTILITIES BUT SHOWN ON PW ORG. CHART:
 * 1A. 1 - CIVIL ENG. III
 * 1B. 1.5 - ENGR. TECH. II
 * 1C. 1 - GIS TECHNICIAN
 * 1D. 1 - CUSTODIAN
- POSITION FUNDED BY POLICE DEPARTMENT BUT SHOWN ON UTILITIES ORG. CHART:
 POLICE COURIER
- POSITION FUNDED BY PARKS DEPARTMENT BUT SHOWN ON PW ORG. CHART:
 BUILDING CRAFTSWORKER
- POSITIONS FUNDED BY STORM WATER UTILITY BUT SHOWN ON WASTEWATER CHART:
 * 4A. 1 - STORM CREW SUPERVISOR
 * 4B. 1 - STORM CREW UTILITY TECH.
- POSITION FUNDED BY UTILITIES BUT SHOWN ON PARKS ORG. CHART:
 ENVIRONMENTAL EDUCATION SPECIALIST - NATURE CENTER
- POSITIONS SHOWN WITH A DASHED LINE ARE NON-BENEFITED (TEMPORARY) POSITIONS. THESE ARE NOT INCLUDED IN THE POSITION COUNT.