

ABOUT THE CENTER



MAJESTIC VIEW NATURE CENTER IS THE CITY OF ARVADA'S ENVIRONMENTAL EDUCATION FACILITY. LOCATED AT 7030 GARRISON STREET, THE CENTER IS A 3,000 SQ. FT. FACILITY THAT HOUSES HANDS-ON NATURE EXHIBITS, WILDLIFE DISPLAYS, AND CLASSROOMS. THE CENTER IS NESTLED IN MAJESTIC VIEW COMMUNITY PARK, AN 80-ACRE PARK THAT FEATURES WETLAND AND UPLAND ECOSYSTEMS, AN INTERPRETIVE NATURE TRAIL, PANORAMIC VIEWS OF THE MOUNTAINS AND VALLEYS, AND A RECREATION/PICNIC AREA.

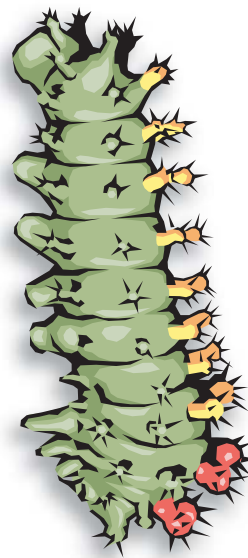


CITY OF ARVADA

7030 GARRISON STREET
ARVADA, COLORADO 80004
(720) 898-7405

Majestic View

Nature Center



Majestic View

Nature Center



SCHOOL PROGRAMS

MAJESTIC VIEW
NATURE CENTER

7030 GARRISON ST., ARVADA

720-898-7405

WWW.ARVADA.ORG/NATURE



CITY OF ARVADA



SCFD
Scientific & Cultural
Facilities District

Making it Possible.

ELEMENTARY SCHOOL TEACHERS . . .

BRING YOUR STUDENTS TO

MAJESTIC VIEW NATURE CENTER OR WE WILL COME TO YOUR CLASSROOM!



FIELD TRIPS

THE NATURE CENTER OFFERS EXCITING ENVIRONMENTAL EDUCATION PROGRAMS THAT MEET JEFFCO SCIENCE STANDARDS. STUDENTS ROTATE THROUGH STATIONS AND PARTICIPATE IN HANDS-ON ACTIVITIES.

ELEMENTARY EXPLORATION

STATIONS FOR 1ST & 2ND GRADES INCLUDE:

MEET A MAMMAL

EXPLORE THE CHARACTERISTICS OF MAMMALS, IDENTIFY THEM BY NAME, AND PARTICIPATE IN A FUN ACTIVITY TO EXPERIENCE VARIOUS FORMS OF MAMMAL MOVEMENT.

WHAT MAKES A BIRD A BIRD?

HOW DO BIRDS FLY? LET'S LOOK AT BIRD BONES, FEATHERS, EGGS, BEAKS, AND FEET, THEN PLAY AN EXCITING BIRD GAME.

AMPHIBIANS AND REPTILES

BECOME A NATURE DETECTIVE AND USE DEDUCTIVE REASONING TO DISCOVER THE SIMILARITIES & DIFFERENCES BETWEEN AMPHIBIANS AND REPTILES.

FASCINATING FISH FACTS

ASSEMBLE A PUZZLE AS YOU LEARN ABOUT THE ADAPTATIONS OF FISH, THEN "GO FISHING" AND SPOT SPECIFIC FISH CHARACTERISTICS.



STATIONS FOR 4TH - 6TH GRADES INCLUDE:

HANDS-ON EXHIBITS!

PARTICIPATE IN HANDS-ON EXHIBITS WHILE LEARNING ABOUT BIRDS, FOOD CHAINS, WETLAND & PRAIRIE ECOSYSTEMS, AND WATER USE & CONSERVATION.

MAMMALS STUDY!

SEE SKINS AND SKULLS OF MANY COLORADO MAMMALS AND FIND OUT ABOUT HERBIVORES, CARNIVORES, & OMNIVORES.

WETLAND ECOSYSTEM EXPERIENCE!



SPOT WETLAND WILDLIFE AND EXPLORE WETLAND ANIMAL & PLANT ADAPTATIONS.

NATURE TRAIL!

DISCOVER THE SHORTGRASS PRAIRIE & PRAIRIE ANIMALS THAT ONCE ROAMED THE AREA, THEN PLAY A FOOD CHAIN/FOOD WEB GAME.



ELEMENTARY EXPLORATION WILL BE OFFERED WEEKDAYS FROM 10 A.M.-12 P.M. OR 12:30P.M DEPENDING ON THE AGE GROUP. UP TO 60 STUDENTS PER PROGRAM CAN BE ACCOMMODATED. THE COST IS \$3.75/STUDENT. PLEASE CALL **720-898-7405** FOR FURTHER INFORMATION OR TO SCHEDULE A FIELD TRIP.

OUTREACH PROGRAMS

AWARD WINNING WATER WISE! PROGRAM AND CONTEST

HEY, ARVADA 5TH GRADE TEACHERS...WANT TO ENHANCE SOME OF THE WATER CONCEPTS COVERED IN YOUR SCIENCE UNITS? THEN SIGN UP FOR THE WATERWISE! WATER CONSERVATION PROGRAM AND CONTEST. TOPICS INCLUDE: THE IMPORTANCE OF WATER, THE WATER CYCLE, THE AMOUNT OF WATER ACTUALLY AVAILABLE FOR HUMAN USE, ARVADA RESIDENT WATER USE, WHERE ARVADA'S WATER COMES FROM, THE IMPORTANCE OF CONSERVING WATER, AND MORE! STUDENTS ALSO PARTICIPATE IN A HOME WATER CONSERVATION CONTEST. THIS PROGRAM IS SPONSORED BY THE NATURE CENTER AND THE CITY OF ARVADA UTILITIES DIVISION AND IS FREE TO ALL ARVADA ELEMENTARY SCHOOLS. WINNER OF "BEST NEW ENVIRONMENTAL EDUCATION PROGRAM IN COLORADO - 2007".

COMMUNITY OUTREACH



THE CENTER OFFERS A VARIETY OF ENVIRONMENTAL PROGRAMS THAT ARE POPULAR FOR SCOUTS AND COMMUNITY GROUPS. THESE PROGRAMS CAN

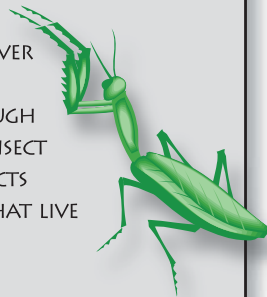
BE PRESENTED AT YOUR SITE OR OURS AND ADAPTED FOR DIFFERENT AGES FROM PRESCHOOL THROUGH ADULT. EXAMPLES INCLUDE MOST OF THE SCHOOL TOPICS, PLUS ENDANGERED SPECIES, ANIMALS & ART, BIRDING, AND MORE.

PRE-SCHOOL AND KINDERGARTEN INCLUDES BUTTERFLIES, HOW DO PLANTS GROW?, AND MY FIVE SENSES.

PLEASE CALL **720-898-7405** OR VISIT US AT **WWW.ARVADA.ORG/NATURE** FOR FURTHER INFORMATION.

NEW! 3RD GRADE INCREDIBLE INSECTS!

EXPLORE THE FASCINATING WORLD OF INSECTS. SEE A PLAY AND FIND OUT WHY THEY ARE SO IMPORTANT TO ECOSYSTEMS. DRESS UP A CLASSMATE LIKE AN INSECT AND DISCOVER THEIR AMAZING CHARACTERISTICS. SEE THEM UP CLOSE AND PERSONAL THROUGH MODELS AND SAMPLES. INVESTIGATE INSECT LIFE CYCLES, OBSERVE, HELP CATCH INSECTS OUTSIDE, AND LEARN ABOUT THOSE THAT LIVE IN OUR AREA.



THE JEFFERSON COUNTY SCIENTIFIC & CULTURAL FACILITIES DISTRICT
ASSISTS WITH FUNDING FOR THIS PROGRAM.