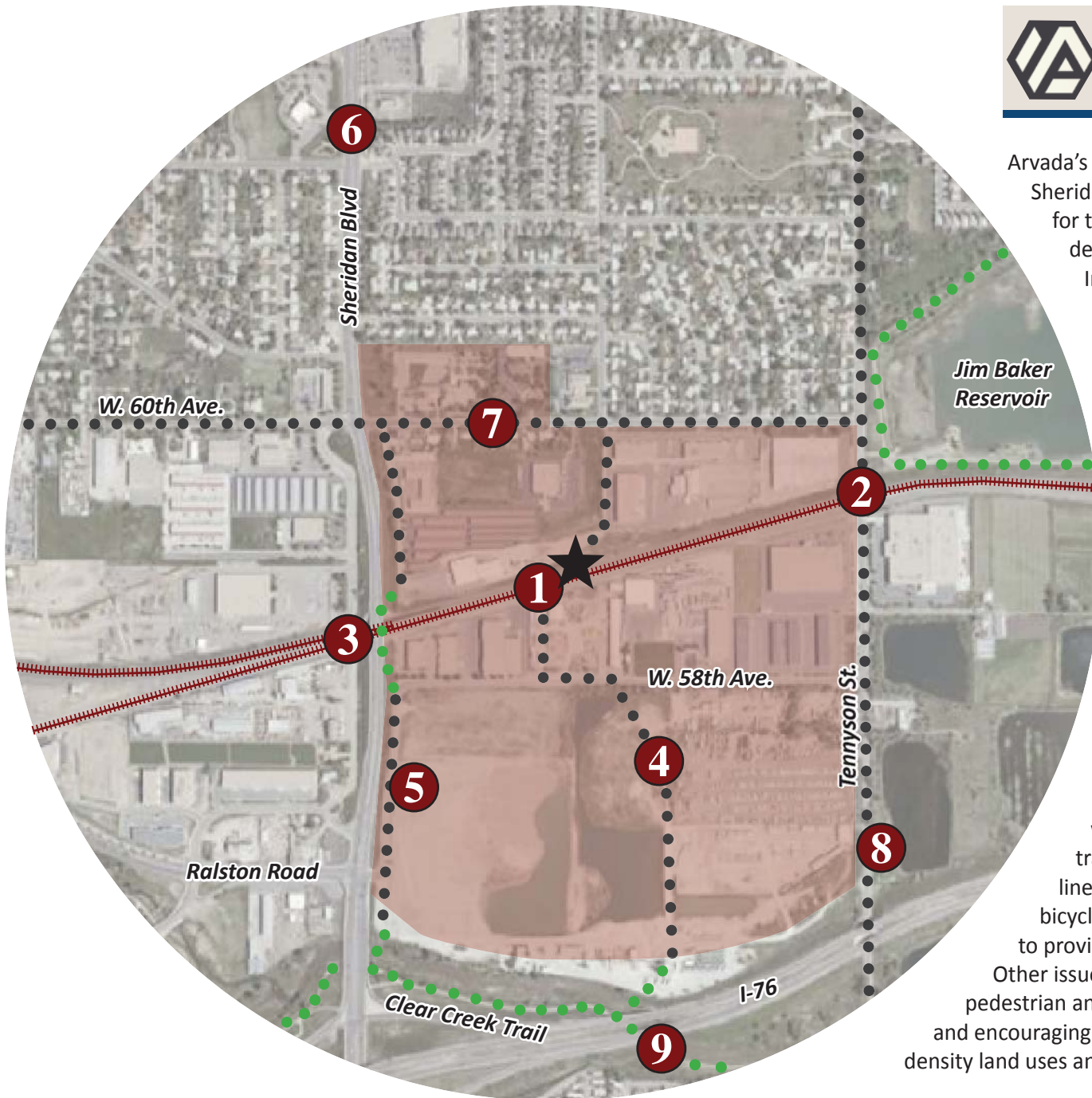


SHERIDAN Station Access Plan



Arvada's eastern FasTracks station is located off of Sheridan Boulevard, just north of I-76. The vision for this TOD site is to become one of the most desirable employment centers in Arvada. Infill development within the half-mile TOD planning area is proposed to include a full range of recreational, retail, transportation and housing options that can support the commercial/industrial center and provide a rich environment for employees.

The Sheridan station is located 1/2 mile north of the Clear Creek Trail. This 19.5-mile multiuse path is a major regional trail that connects communities from Golden to Commerce City. It links directly with Denver's Platte River trail system and Arvada's Ralston Creek Trail. Enhanced connections from the Sheridan Station to the regional trail system are desired.

The TOD site is bisected by parallel BNSF and Union Pacific rail lines, which diverge just west of Sheridan Boulevard. The two active tracks, combined with the proposed FasTracks line, create a significant barrier for internal bicycle and pedestrian travel as RTD is not planning to provide a grade-separated crossing at this site. Other issues at the Sheridan station include optimizing pedestrian and vehicular connectivity within the TOD center and encouraging non-motorized modes in an area with lower density land uses and longer trip distances.

RAILROAD CROSSING OPTIONS:

1 A New Pedestrian Bridge

Long-term option when land uses successfully intensify

2 Tennyson Street

Preferred route for north/south bicyclist access

RTD is rebuilding at-grade street crossing

3 Sheridan Blvd Bridge

Not recommended for bicycling, but the preferred interim route for pedestrians

Retrofit and improve walkway on roadway bridge, including providing direct access to frontage roads north and south

PERIMETER ROADWAY IMPROVEMENTS:

6 Sheridan Boulevard

Not recommended as a bicycling corridor

Missing segments of sidewalk need to be completed for pedestrian travel

7 W. 60th Avenue

Stripe with bicycle lanes

Complete missing sidewalk segments and construct to wider urban standards

8 Tennyson Street

North of RR: stripe with bicycle lanes

South of RR: widen to add paved shoulders

INTERNAL SITE CONNECTIVITY:

4 New Streets

Proposed narrow, internal TOD streets with pedestrian-friendly features

5 Sheridan Frontage Roads (west side)

Add sidewalks

Provide connection to the Clear Creek Trail

Provide direct access to the Sheridan bridge walkway from the south frontage road/W. 58th Ave. and the north frontage road/RTD site

CLEAR CREEK TRAIL CONNECTIONS:

9 Signing and Spur Trails

Construct multiuse path connection to the Sheridan frontage road

Construct multiuse path link in alignment with new internal pedestrian priority street

Sign existing at-grade crossing of Tennyson as the Sheridan Station access route

August 2009 Draft

Proposed recommendations for Public Review and Comment

prepared by Charlier Associates, Inc.

