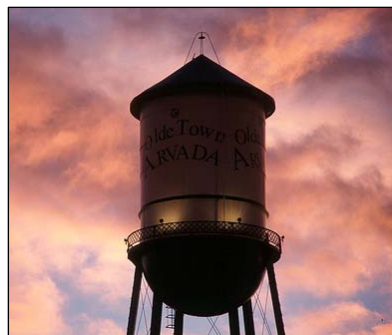




Olde Town Parking and Transportation Demand Study



Initial Input Meetings
December 11, 2008

Agenda

- Project Introduction
- Study Area
- Project Scope of Services
- Project Schedule
- Initial Questions



Project Introduction

- General Project Context and Information
- Why Conduct a Parking Study?
- Role of the Stakeholder Group
- Public Input Process
 - Introductory meetings (Today)
 - Second set of stakeholder and public meetings (Jan. '09)
 - Third set of stakeholder and public meetings (Mar./Apr. '09)
 - Final stakeholder and public meetings (Jun. '09)

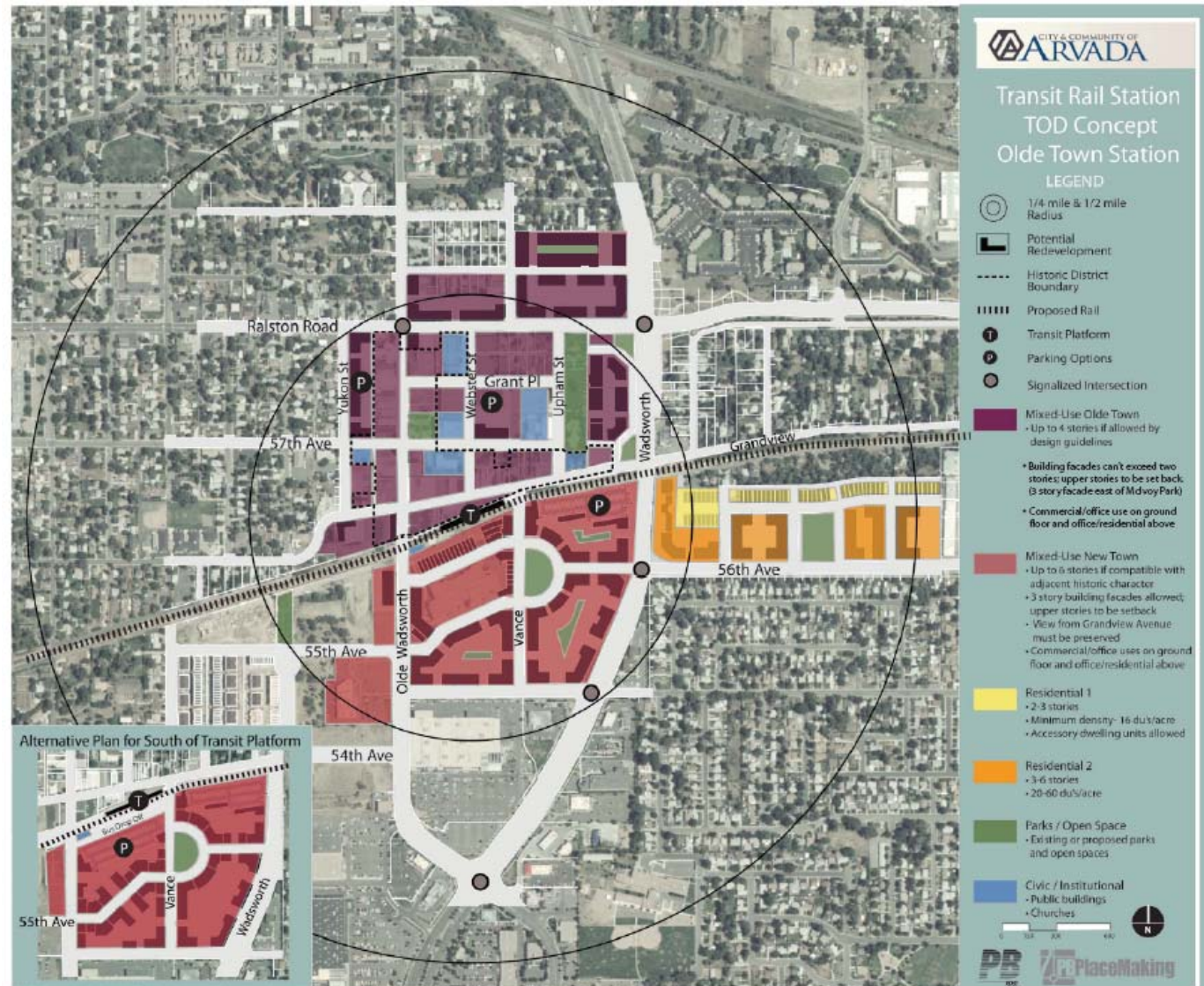


PARKING STUDY



CITY OF ARVADA

Station Area Plan



Project Scope of Services

- Phase 1 – Background Data, Site Visit, and Public Outreach
 - Task 1: Review available background data
 - Task 2: Site visit (data collection, initial public input)
 - Task 3: Public outreach – feedback and issues
- Phase 2 – Strategy Development and Refinement
 - Determine future conditions (2010, 2015, and 2020)
 - Develop preliminary alternatives
 - Parking planning and management
 - Transportation demand management strategies

Project Scope of Services

- Phase 3 – Draft Report Development
 - Incorporate information and input from Phases 1 and 2
 - Preliminary short-term and long-term management plan
- Phase 4 – Final Study Report
 - Compile final report
 - Present to city, stakeholders, and the general public



PARKING STUDY



CITY OF ARVADA

Phases and Tasks	Nov. '08			Dec. '08				Jan. '09				Feb. '09				Mar. '09				Apr. '09				May '09				Jun. '09																																																																									
<i>Week of:</i>	15	23	30	8	15	22	29	5	12	19	26	2	9	16	23	2	9	16	23	30	6	13	20	27	4	11	18	25	1	8	15	22	29																																																																				
Phase One - Review of Background Data, Initial Site Visit, and Public Outreach	[Light Blue Bar]																																																																																																				
<i>Task 1 - Review of Background Data</i>	[Yellow Bar]																																																																																																				
Submit Initial Request for Information	★																																																																																																				
Conduct Initial Project Kick-Off Mtg.	★																																																																																																				
Conduct Travel Mode Research	[Orange Bar]																																																																																																				
<i>Task 2 - Initial Site Visit (Public Outreach, Parking Inventory and Occupancy Counts)</i>																																																																																																					
Conduct Stakeholder Input Meetings (Issues I.D.)				[Yellow Bar]																																																																																																	
Conduct Parking Inventory/Occupancy Surveys				★																																																																																																	
<i>Task 3 - Public Outreach - Feedback and Issues Discussion</i>																																																																																																					
Conduct Public/Stakeholder Input Sessions								★																																																																																													
Conduct Public Survey								[Orange Bar]																																																																																													
<i>Phase One Deliverables to City</i>																																	★																																																																				
Phase Two - Strategy Development and Refinement																																																																																																					
<i>Determine Future Conditions</i>																																	[Light Blue Bar]																																																																				
<i>Develop Preliminary Options/Strategies</i>																																	[Yellow Bar]																																																																				
<i>Stakeholder Input on Preliminary Strategies</i>																																									★																																																												
<i>Phase Two Deliverables to City</i>																																										★																																																											
Phase Three - Draft Report Development																																																																																																					
<i>Develop Draft Report</i>																																	[Light Blue Bar]																																																																				
<i>Provide Draft Report to City</i>																																	[Yellow Bar]																																				★																																
Phase Four - Final Study Report																																																																																																					
<i>Develop Final Project Report</i>																																	[Light Blue Bar]																																																																				
<i>Present Final Report to City and Stakeholders</i>																																	[Yellow Bar]																																				★																																



Initial Questions

- What is your general perception of parking in Olde Town (specifically in the study area)?
- What are the three most important parking-related issues in the study area?
- What opportunities do you see to improve parking conditions in Olde Town?
- What are the three most important issues related to using transportation alternatives (instead of driving alone)?
- What opportunities do you see to improve the use of alternative forms of transportation?

Olde Town Parking and Transportation Demand Study

Thank You!



Questions?