

About the Study and the Schedule

Phase 1 - The first phase of the project is mainly data collection and public input. A consultant hired by the City will conduct detailed counts of parking spaces, the turnover of the parking spaces, and the times of day and day of week when parking demand peaks. The area within which data will be collected is shown in the PowerPoint presentation. Parking counts will be taken for on- and off-street parking as well as public and private parking lots.

A committee of stakeholders was convened by the City and is made up of individuals that represent the business community, area churches, area neighborhoods, RTD and the Arvada Urban Renewal Authority. This group will advise staff on the current issues, possible solutions and recommendations for short term and long term parking issues. Public meetings will also be held in conjunction with the stakeholders committee – usually on the same or consecutive days. A public survey will also be conducted during the first phase of the project.

Phase 2 – Based on the Phase 1 information and opinions collected, the study team will conduct an analysis of existing study area parking supply, management, and operations alternatives. The analysis will provide options and recommendations to improve existing system operations and management.

Using future development plans in the study area including projected employment data, projected use and location of proposed future buildings, and other land use information, future parking demand will be estimated.

Strategies to alleviate existing and future parking deficits could include:

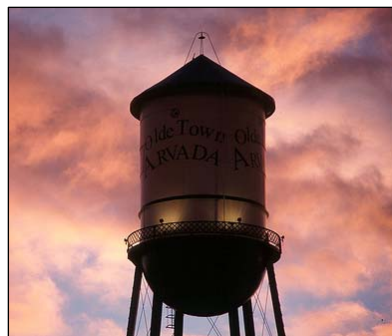
- Strategies to reduce the parking demand in Olde Town
- Methods to manage and better utilize existing parking.
- Parking user allocation options and strategies
- Shared parking strategies
- Options for improving the control of on-street parking spaces
- Parking garages
- Way-finding signs
- Lighting and security

It is likely that two stakeholder meetings and two public meetings will be held during Phase 2 as this is where the bulk of the problem solving is done and input is needed.

Phases 3 and 4 – These phases are essentially the documentation of the findings of the study and the recommendations to the City for solutions to parking supply and demand management. One stakeholder and one public meeting are expected early in Phase 3.



Olde Town Parking and Transportation Demand Study



Initial Input Meetings
December 11, 2008

Agenda

- Project Introduction
- Study Area
- Project Scope of Services
- Project Schedule
- Initial Questions



Project Introduction

- General Project Context and Information
- Why Conduct a Parking Study?
- Role of the Stakeholder Group
- Public Input Process
 - Introductory meetings (Today)
 - Second set of stakeholder and public meetings (Jan. '09)
 - Third set of stakeholder and public meetings (Mar./Apr. '09)
 - Final stakeholder and public meetings (Jun. '09)

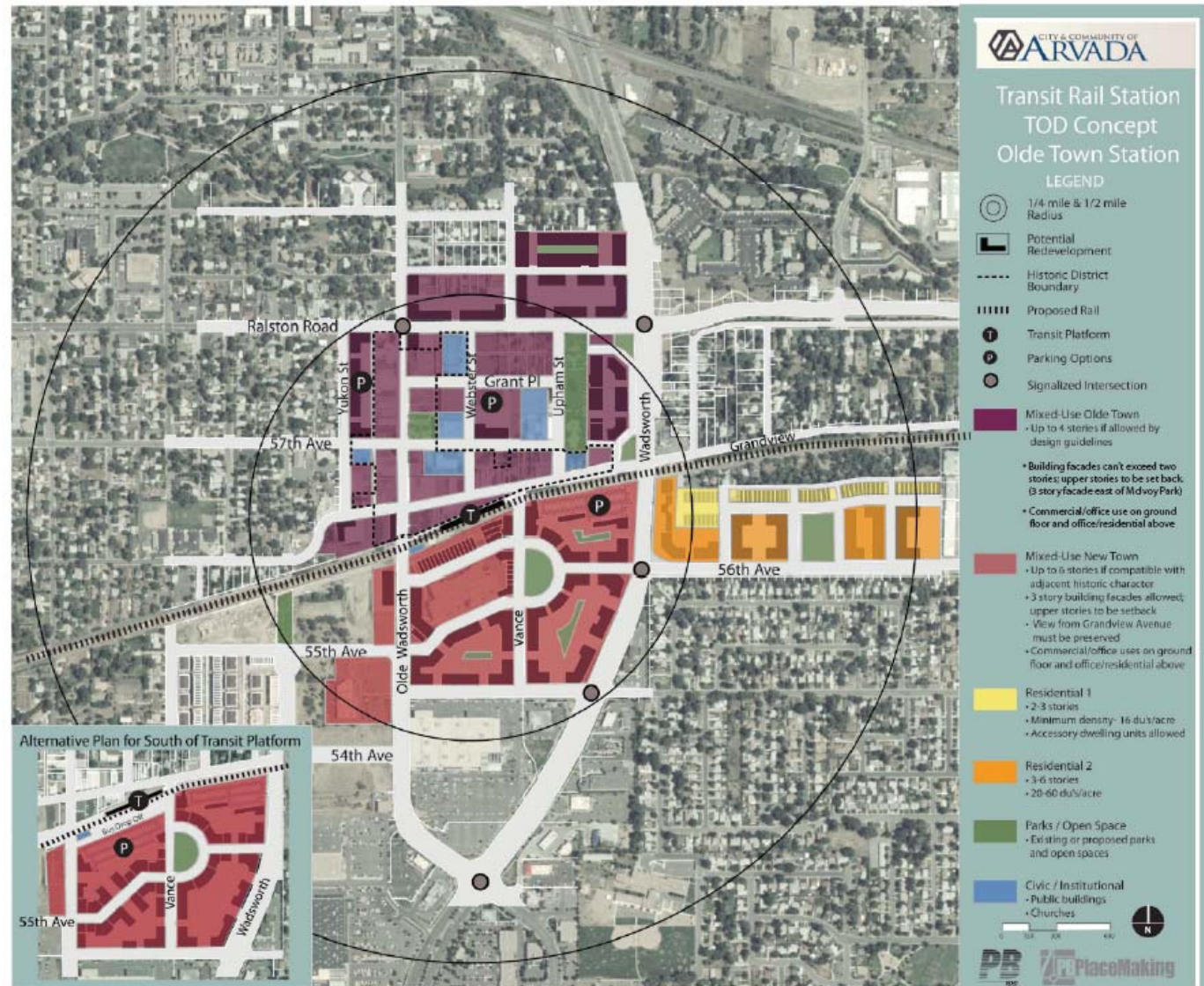


PARKING STUDY



CITY OF ARVADA

Station Area Plan



Project Scope of Services

- Phase 1 – Background Data, Site Visit, and Public Outreach
 - Task 1: Review available background data
 - Task 2: Site visit (data collection, initial public input)
 - Task 3: Public outreach – feedback and issues
- Phase 2 – Strategy Development and Refinement
 - Determine future conditions (2010, 2015, and 2020)
 - Develop preliminary alternatives
 - Parking planning and management
 - Transportation demand management strategies

Project Scope of Services

- Phase 3 – Draft Report Development
 - Incorporate information and input from Phases 1 and 2
 - Preliminary short-term and long-term management plan
- Phase 4 – Final Study Report
 - Compile final report
 - Present to city, stakeholders, and the general public



PARKING STUDY



CITY OF ARVADA

| Phases and Tasks | Nov. '08 | | | Dec. '08 | | | | Jan. '09 | | | | Feb. '09 | | | | Mar. '09 | | | | Apr. '09 | | | | May '09 | | | | Jun. '09 | | | | | | | | | | | | | | | | | | | | | | | | | | | | | | | | | | | | | | | | | | | | | | | | | | | | | | | | | | | | | | | | | | | | | |
|--|------------------|----|----|--------------|----|----|----|--------------|----|----|----|----------|---|----|----|----------|---|----|----|----------|---|----|----|---------|---|----|----|----------|---|---|----|------------------|----|--|--|--|--|--|--|---|---|--|--|--|--|--|--|--|--|--|--|--|--|--|--|--|--|--|--|--|--|--|--|--|--|--|---|--|--|--|--|--|--|--|--|--|--|--|--|--|--|--|--|--|--|--|--|--|--|--|--|--|--|--|--|--|--|
| <i>Week of:</i> | 15 | 23 | 30 | 8 | 15 | 22 | 29 | 5 | 12 | 19 | 26 | 2 | 9 | 16 | 23 | 2 | 9 | 16 | 23 | 30 | 6 | 13 | 20 | 27 | 4 | 11 | 18 | 25 | 1 | 8 | 15 | 22 | 29 | | | | | | | | | | | | | | | | | | | | | | | | | | | | | | | | | | | | | | | | | | | | | | | | | | | | | | | | | | | | | | | | |
| Phase One - Review of Background Data, Initial Site Visit, and Public Outreach | [Light Blue Bar] | | | | | | | | | | | | | | | | | | | | | | | | | | | | | | | | | | | | | | | | | | | | | | | | | | | | | | | | | | | | | | | | | | | | | | | | | | | | | | | | | | | | | | | | | | | | | | | | |
| <i>Task 1 - Review of Background Data</i> | [Yellow Bar] | | | | | | | | | | | | | | | | | | | | | | | | | | | | | | | | | | | | | | | | | | | | | | | | | | | | | | | | | | | | | | | | | | | | | | | | | | | | | | | | | | | | | | | | | | | | | | | | |
| Submit Initial Request for Information | ★ | | | | | | | | | | | | | | | | | | | | | | | | | | | | | | | | | | | | | | | | | | | | | | | | | | | | | | | | | | | | | | | | | | | | | | | | | | | | | | | | | | | | | | | | | | | | | | | | |
| Conduct Initial Project Kick-Off Mtg. | ★ | | | | | | | | | | | | | | | | | | | | | | | | | | | | | | | | | | | | | | | | | | | | | | | | | | | | | | | | | | | | | | | | | | | | | | | | | | | | | | | | | | | | | | | | | | | | | | | | |
| Conduct Travel Mode Research | [Orange Bar] | | | | | | | | | | | | | | | | | | | | | | | | | | | | | | | | | | | | | | | | | | | | | | | | | | | | | | | | | | | | | | | | | | | | | | | | | | | | | | | | | | | | | | | | | | | | | | | | |
| <i>Task 2 - Initial Site Visit (Public Outreach, Parking Inventory and Occupancy Counts)</i> | | | | | | | | | | | | | | | | | | | | | | | | | | | | | | | | | | | | | | | | | | | | | | | | | | | | | | | | | | | | | | | | | | | | | | | | | | | | | | | | | | | | | | | | | | | | | | | | | |
| Conduct Stakeholder Input Meetings (Issues I.D.) | | | | [Yellow Bar] | | | | | | | | | | | | | | | | | | | | | | | | | | | | | | | | | | | | | | | | | | | | | | | | | | | | | | | | | | | | | | | | | | | | | | | | | | | | | | | | | | | | | | | | | | | | | |
| Conduct Parking Inventory/Occupancy Surveys | | | | ★ | | | | | | | | | | | | | | | | | | | | | | | | | | | | | | | | | | | | | | | | | | | | | | | | | | | | | | | | | | | | | | | | | | | | | | | | | | | | | | | | | | | | | | | | | | | | | |
| <i>Task 3 - Public Outreach - Feedback and Issues Discussion</i> | | | | | | | | | | | | | | | | | | | | | | | | | | | | | | | | | | | | | | | | | | | | | | | | | | | | | | | | | | | | | | | | | | | | | | | | | | | | | | | | | | | | | | | | | | | | | | | | | |
| Conduct Public/Stakeholder Input Sessions | | | | | | | | ★ | | | | | | | | | | | | | | | | | | | | | | | | | | | | | | | | | | | | | | | | | | | | | | | | | | | | | | | | | | | | | | | | | | | | | | | | | | | | | | | | | | | | | | | | | |
| Conduct Public Survey | | | | | | | | [Orange Bar] | | | | | | | | | | | | | | | | | | | | | | | | | | | | | | | | | | | | | | | | | | | | | | | | | | | | | | | | | | | | | | | | | | | | | | | | | | | | | | | | | | | | | | | | | |
| <i>Phase One Deliverables to City</i> | | | | | | | | | | | | | | | | | | | | | | | | | | | | | | | | ★ | | | | | | | | | | | | | | | | | | | | | | | | | | | | | | | | | | | | | | | | | | | | | | | | | | | | | | | | | | | | | | | | | |
| Phase Two - Strategy Development and Refinement | | | | | | | | | | | | | | | | | | | | | | | | | | | | | | | | | | | | | | | | | | | | | | | | | | | | | | | | | | | | | | | | | | | | | | | | | | | | | | | | | | | | | | | | | | | | | | | | | |
| <i>Determine Future Conditions</i> | | | | | | | | | | | | | | | | | | | | | | | | | | | | | | | | [Light Blue Bar] | | | | | | | | | | | | | | | | | | | | | | | | | | | | | | | | | | | | | | | | | | | | | | | | | | | | | | | | | | | | | | | | | |
| <i>Develop Preliminary Options/Strategies</i> | | | | | | | | | | | | | | | | | | | | | | | | | | | | | | | | [Yellow Bar] | | | | | | | | | | | | | | | | | | | | | | | | | | | | | | | | | | | | | | | | | | | | | | | | | | | | | | | | | | | | | | | | | |
| <i>Stakeholder Input on Preliminary Strategies</i> | | | | | | | | | | | | | | | | | | | | | | | | | | | | | | | | | | | | | | | | ★ | | | | | | | | | | | | | | | | | | | | | | | | | | | | | | | | | | | | | | | | | | | | | | | | | | | | | | | | | |
| <i>Phase Two Deliverables to City</i> | | | | | | | | | | | | | | | | | | | | | | | | | | | | | | | | | | | | | | | | | ★ | | | | | | | | | | | | | | | | | | | | | | | | | | | | | | | | | | | | | | | | | | | | | | | | | | | | | | | | |
| Phase Three - Draft Report Development | | | | | | | | | | | | | | | | | | | | | | | | | | | | | | | | | | | | | | | | | | | | | | | | | | | | | | | | | | | | | | | | | | | | | | | | | | | | | | | | | | | | | | | | | | | | | | | | | |
| <i>Develop Draft Report</i> | | | | | | | | | | | | | | | | | | | | | | | | | | | | | | | | [Light Blue Bar] | | | | | | | | | | | | | | | | | | | | | | | | | | | | | | | | | | | | | | | | | | | | | | | | | | | | | | | | | | | | | | | | | |
| <i>Provide Draft Report to City</i> | | | | | | | | | | | | | | | | | | | | | | | | | | | | | | | | [Yellow Bar] | | | | | | | | | | | | | | | | | | | | | | | | | | | | | | | | | | | ★ | | | | | | | | | | | | | | | | | | | | | | | | | | | | | | |
| Phase Four - Final Study Report | | | | | | | | | | | | | | | | | | | | | | | | | | | | | | | | | | | | | | | | | | | | | | | | | | | | | | | | | | | | | | | | | | | | | | | | | | | | | | | | | | | | | | | | | | | | | | | | | |
| <i>Develop Final Project Report</i> | | | | | | | | | | | | | | | | | | | | | | | | | | | | | | | | [Light Blue Bar] | | | | | | | | | | | | | | | | | | | | | | | | | | | | | | | | | | | | | | | | | | | | | | | | | | | | | | | | | | | | | | | | | |
| <i>Present Final Report to City and Stakeholders</i> | | | | | | | | | | | | | | | | | | | | | | | | | | | | | | | | [Yellow Bar] | | | | | | | | | | | | | | | | | | | | | | | | | | | | | | | | | | | ★ | | | | | | | | | | | | | | | | | | | | | | | | | | | | | | |



CITY OF ARVADA

Initial Questions

- What is your general perception of parking in Olde Town (specifically in the study area)?
- What are the three most important parking-related issues in the study area?
- What opportunities do you see to improve parking conditions in Olde Town?
- What are the three most important issues related to using transportation alternatives (instead of driving alone)?
- What opportunities do you see to improve the use of alternative forms of transportation?

Olde Town Parking and Transportation Demand Study

Thank You!



Questions?