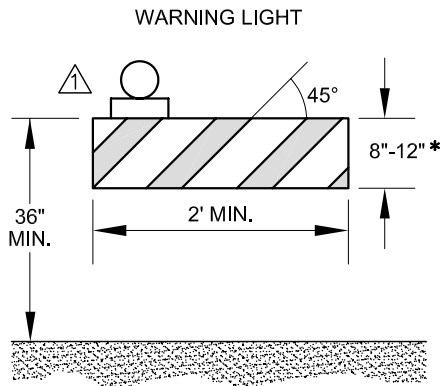
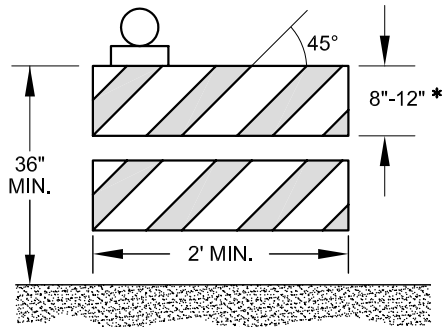


TABLE OF CONTENTS
PART IV – STANDARD DRAWINGS
TRAFFIC CONTROL

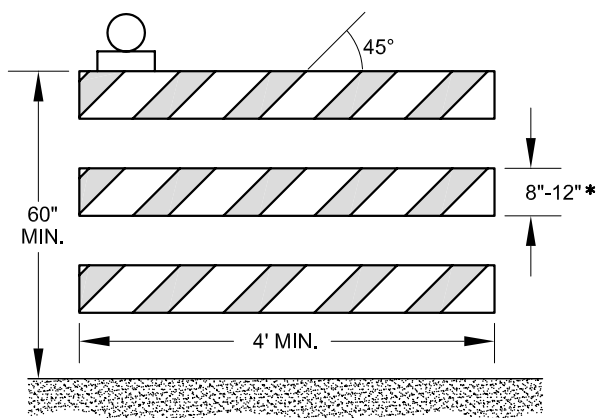
<u>Section No.</u>	<u>Description</u>	<u>Page No.</u>
TC	Barricades & Channelizing Devices	TC-1
TC	Spacing & Taper Length	TC-2
TC	Typical Drawing.....	TC-3
TC	Closure of Right Lane	TC-4
TC	Closure of Left Lane.....	TC-5
TC	Half Closure of Roadway.....	TC-6
TC	Full Closure of Roadway	TC-7
TC	Lane Closure on Far Side of Intersection.....	TC-8
TC	Lane Closure on Near Side of Intersection.....	TC-9
TC	Closure Right Side of Roadway	TC-10
TC	Closure Left Side of Roadway.....	TC-11
TC	Closure Center of Roadway	TC-12
TC	Complete Closure of Roadway.....	TC-13
TC	Lane Closure with Flagger	TC-14
TC	Shoulder Work	TC-15
TC	Half Closure – Concrete Replacement.....	TC-16
TC	Full Closure – Concrete Replacement	TC-17
TC	Traffic Control – Low Volume Street w/o Centerline.....	TC-18



TYPE I BARRICADE**



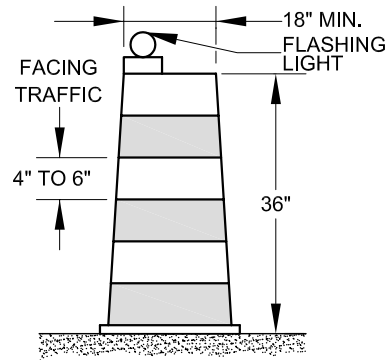
TYPE II BARRICADE**



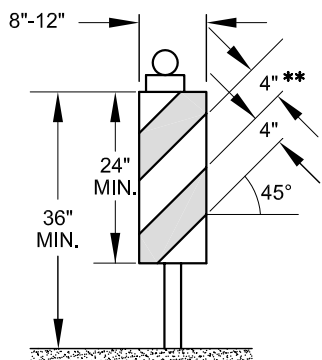
TYPE III BARRICADE**

* NOMINAL LUMBER DIMENSIONS ARE SATISFACTORY FOR BARRICADE RAIL WIDTH DIMENSIONS

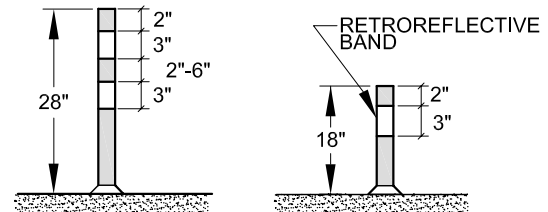
** RAIL STRIPE WIDTHS SHALL BE 6 INCHES EXCEPT WHERE RAIL LENGTHS ARE LESS THAN 36 INCHES, THEN 4 INCH WIDE STRIPES MAY BE USED. THE SIDES OF BARRICADES FACING TRAFFIC SHALL HAVE RETROREFLECTIVE RAIL FACES.



DRUM

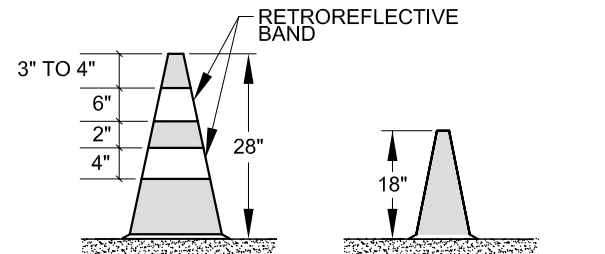


VERTICAL PANEL



DAY USE AND ROADWAY SPEED 45 MPH OR LESS DAY USE AND ROADWAY SPEED 25 MPH OR LESS

TUBULAR MARKERS



DAY USE AND ROADWAY SPEED 45 MPH OR LESS DAY USE AND ROADWAY SPEED 25 MPH OR LESS

CONES

H:\DWGS\SPCS\TRAFFIC\TC-1.DWG

⚠	DDV	3/30/05	CHG. NOTES TO CONES
No.	Dwn.	Date.	Revision

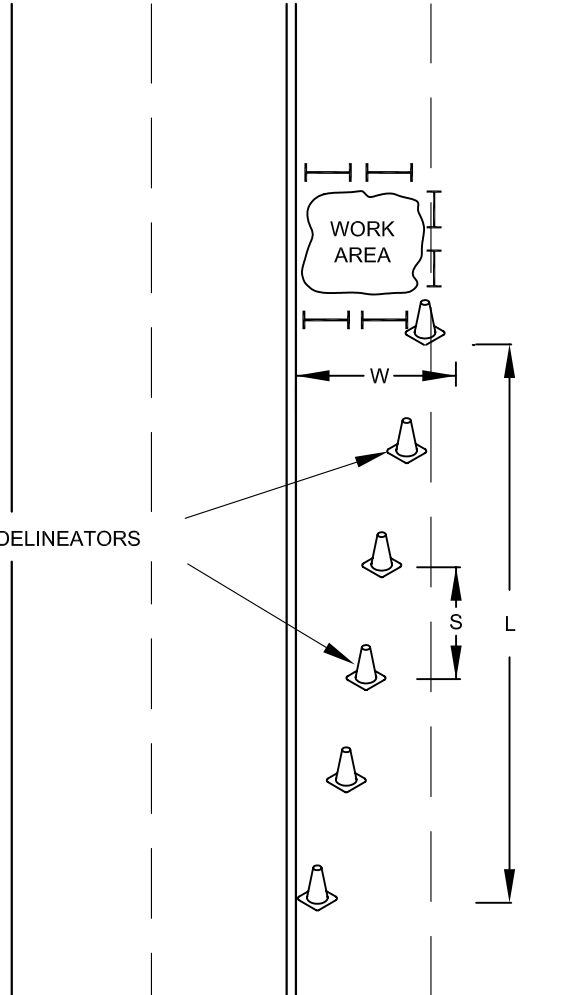


BARRICADES & CHANNELIZING DEVICES

approved
 date: 3/6/03 scale: NTS dwn: D.D.V. sht: 1 of 18

TRAFFIC AND TRANS. DIV. OF PUBLIC WORKS DEPT.

TRAFFIC CONES OR PLIABLE DELINEATORS



SPEED LIMIT	MINIMUM TAPER LENGTH (L) LANE WIDTH			MAXIMUM SPACING (S)
	10'	11'	12'	
25 MPH	105'	115'	125'	25'
30 MPH	150'	165'	180'	30'
35 MPH	205'	225'	245'	35'
40 MPH	270'	295'	320'	40'
45 MPH	450'	495'	540'	45'

H:\DWGS\SPCS\TRAFFIC\TC-2.DWG

No.	Dwn.	Date.	Revision

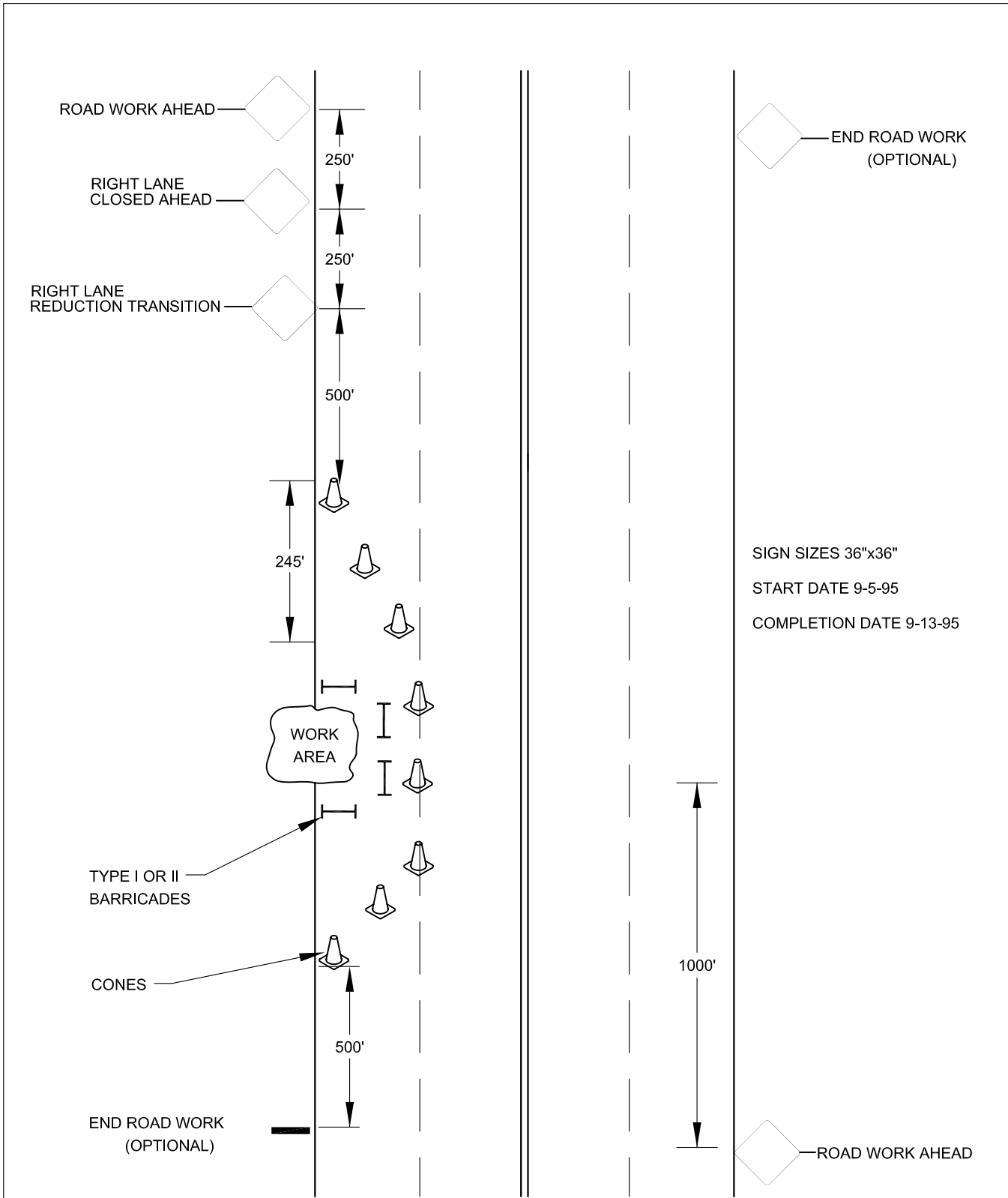


CITY
of
ARVADA

SPACING & TAPER LENGTH

approved
date: 3/6/03 scale: NTS dwn: D.D.V. sht:

TRAFFIC AND TRANS. DIV. OF PUBLIC WORKS DEPT.



H:\DWGS\SPECS\TRAFFIC\TC-3.DWG

No.	Dwn.	Date.	Revision

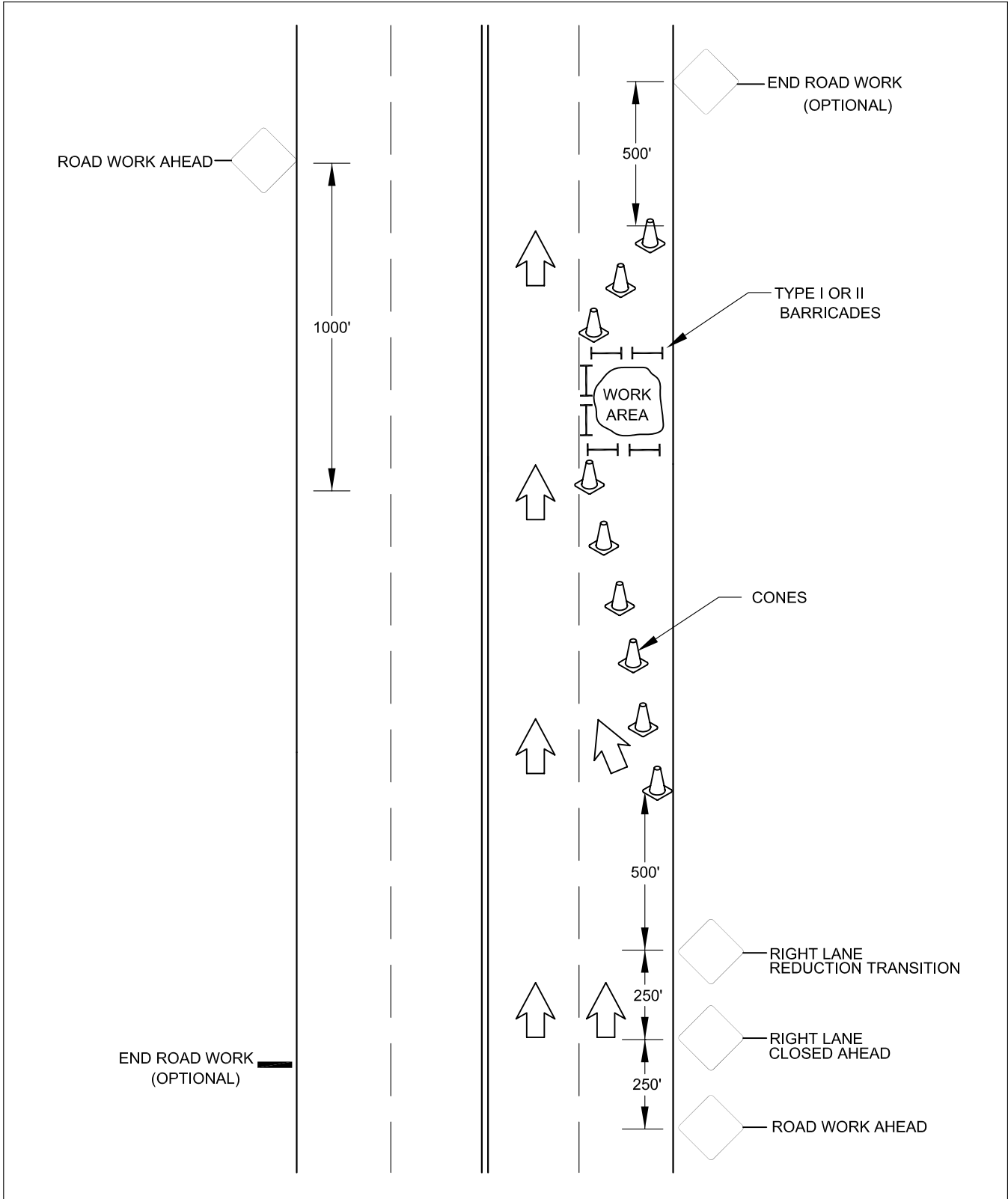


CITY
of
ARVADA

HIGH VOLUME STREET

approved
date: 3/6/03 | scale: NTS | dwn: D.D.V. | sht:

TRAFFIC AND TRANS. DIV. OF PUBLIC WORKS DEPT.



H:\DWGS\SPCS\TRAFFIC\TC-4.DWG

No.	Dwn.	Date.	Revision

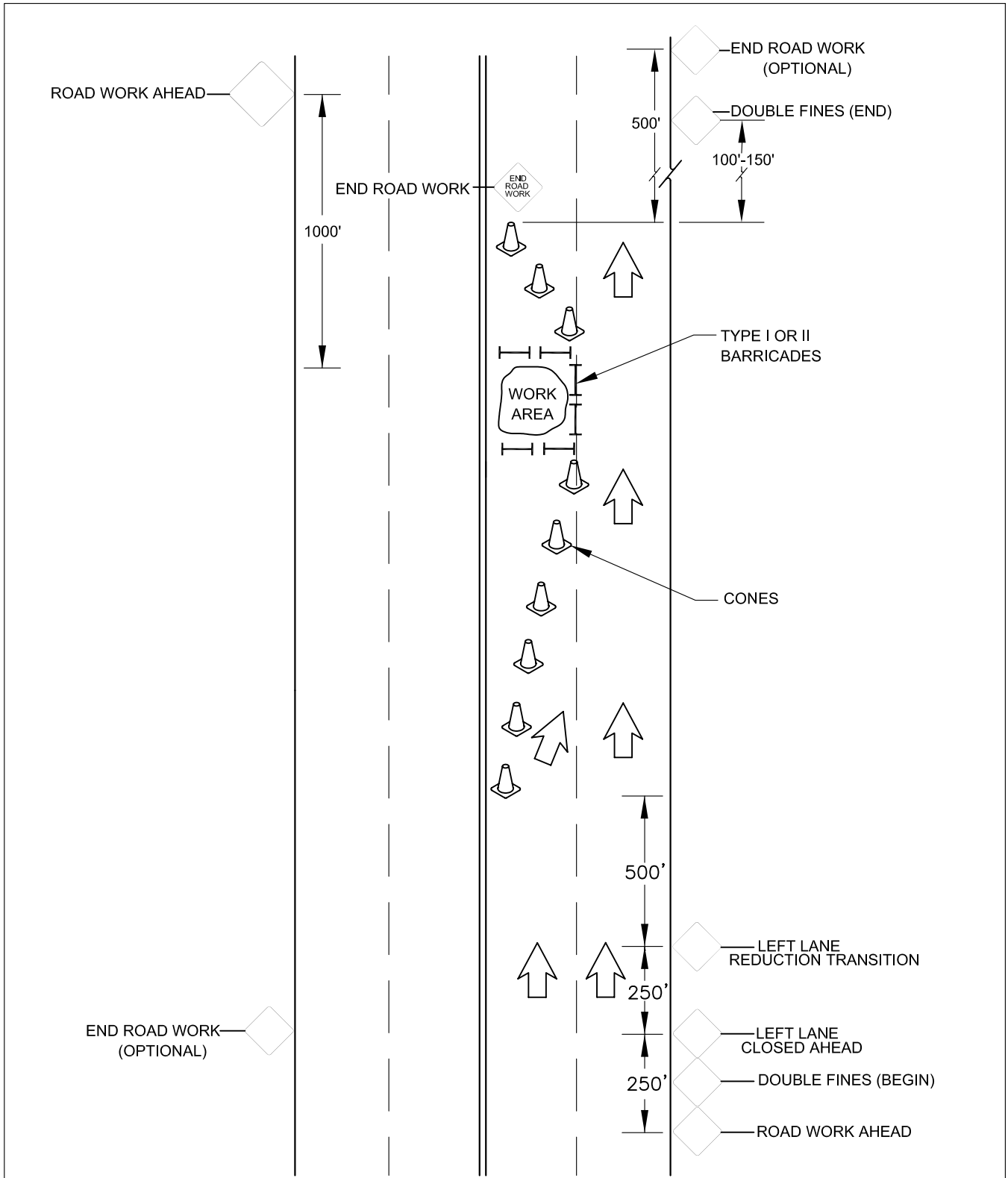


CITY
of
ARVADA

CLOSURE OF RIGHT LANE
HIGH VOLUME STREET

approved
date: 3/6/03 scale: NTS dwn: D.D.V. sht:

TRAFFIC AND TRANS. DIV. OF PUBLIC WORKS DEPT.



H:\DWGS\SPECS\TRAFFIC\TC-5.DWG

No.	Dwn.	Date.	Revision



CITY
of
ARVADA

CLOSURE OF LEFT LANE HIGH VOLUME STREET

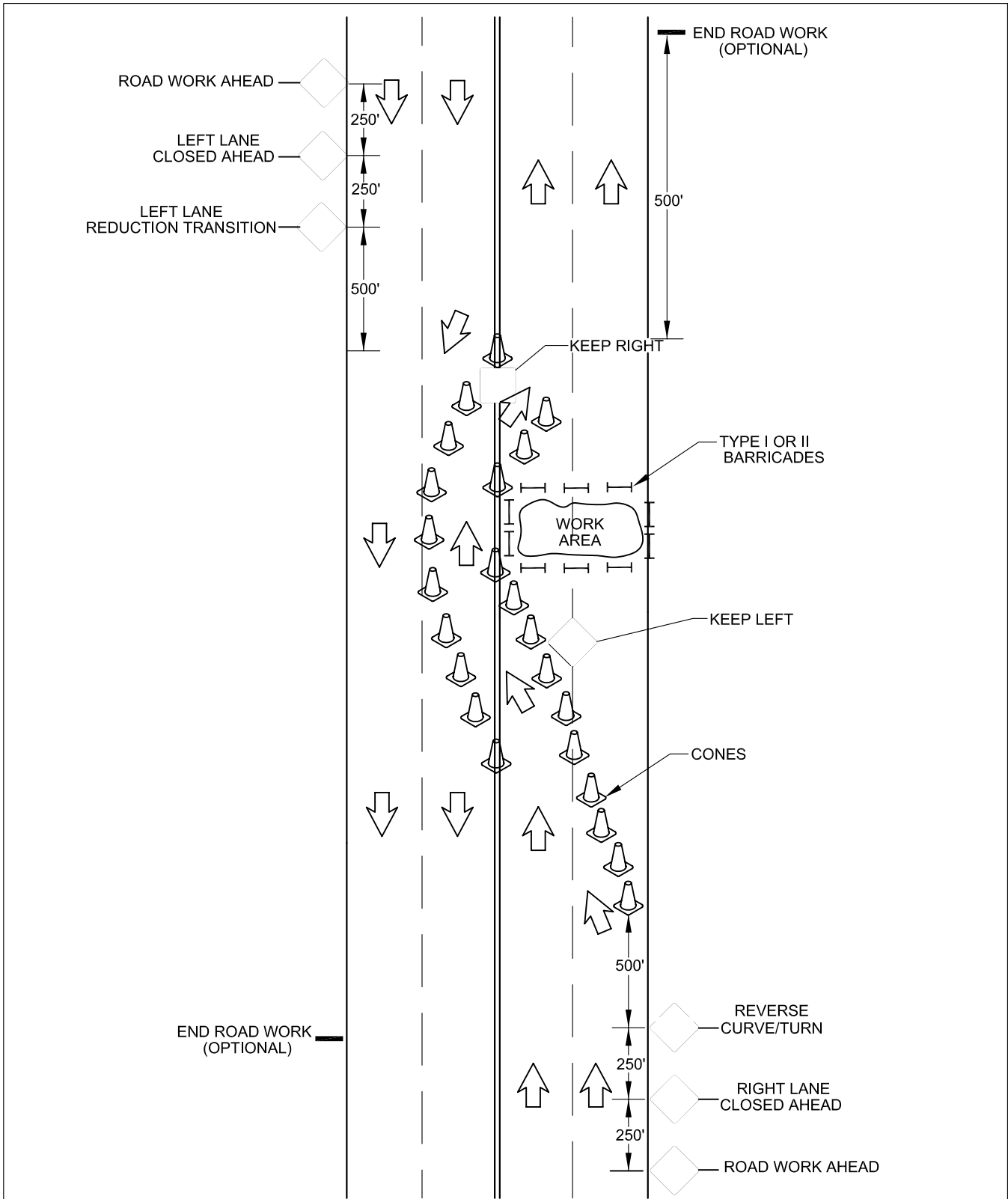
approved

date: 3/6/03

scale: NTS dwn: D.D.V.

sht:

TRAFFIC AND TRANS. DIV. OF PUBLIC WORKS DEPT.



H:\DWGS\SPCS\TRAFFIC\TC-6.DWG

No.	Dwn.	Date.	Revision

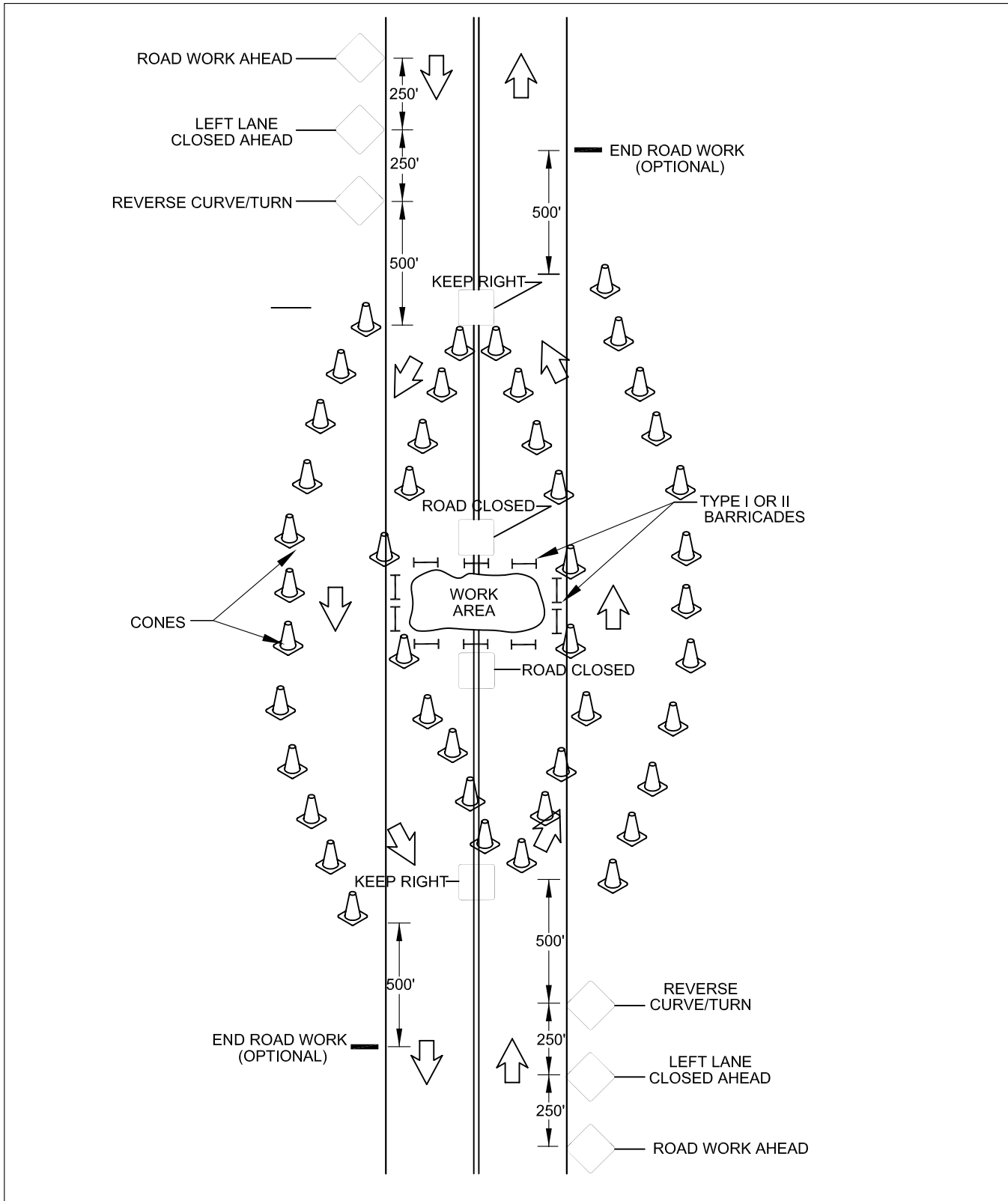


CITY
of
ARVADA

HALF CLOSURE OF ROADWAY HIGH VOLUME STREET

approved
date: 3/6/03 | scale: NTS | dwn: D.D.V. | sht:

TRAFFIC AND TRANS. DIV. OF PUBLIC WORKS DEPT.



H:\DWG\SPECS\TRAFFIC\TC-7.DWG

No.	Dwn.	Date.	Revision



CITY
of
ARVADA

FULL CLOSURE OF ROADWAY HIGH VOLUME STREET

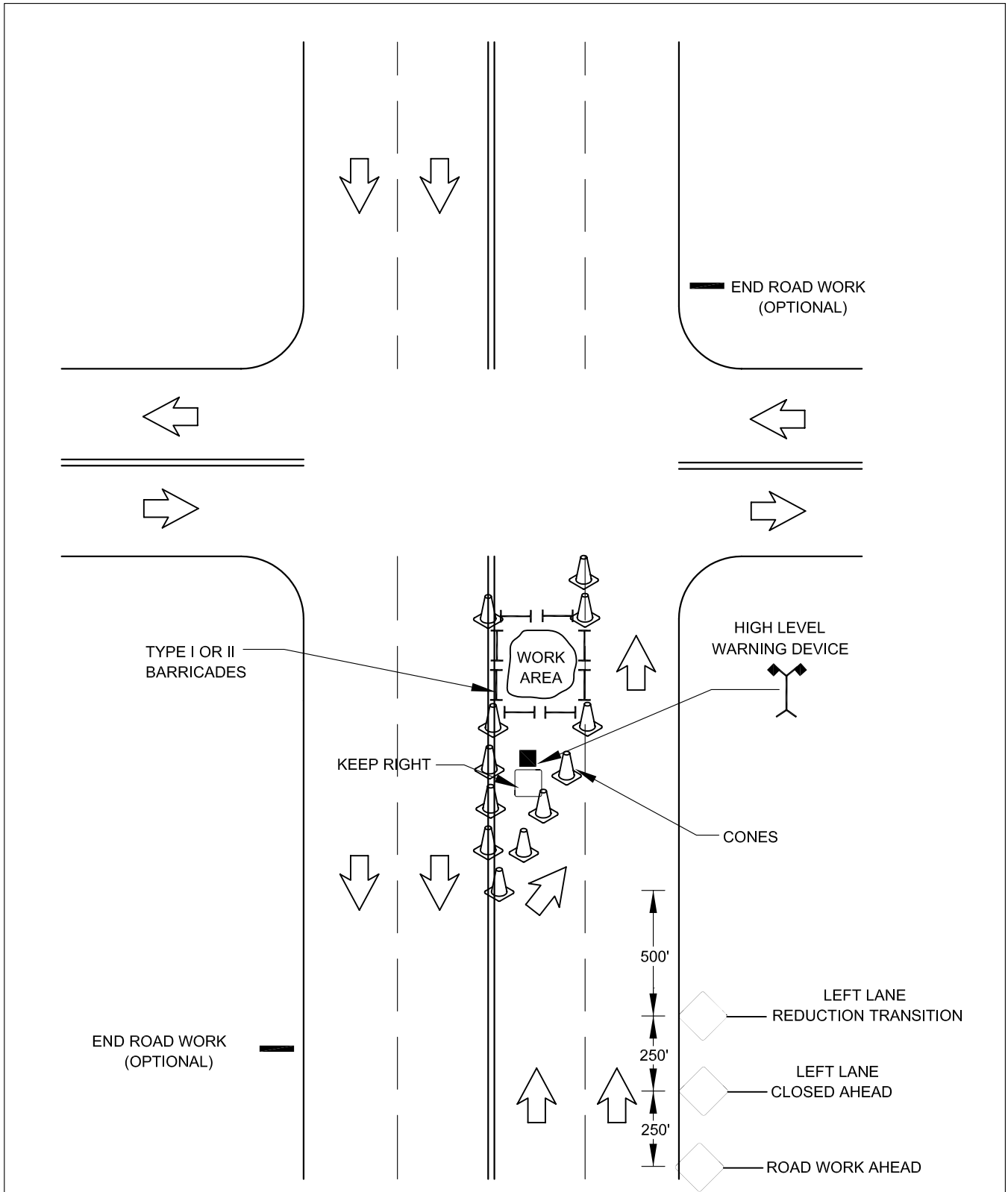
approved

date: 3/6/03

scale: NTS dwn: D.D.V.

sht:

TRAFFIC AND TRANS. DIV. OF PUBLIC WORKS DEPT.



H:\DWGS\SPCS\TRAFFIC\TC-9.DWG

No.	Dwn.	Date.	Revision

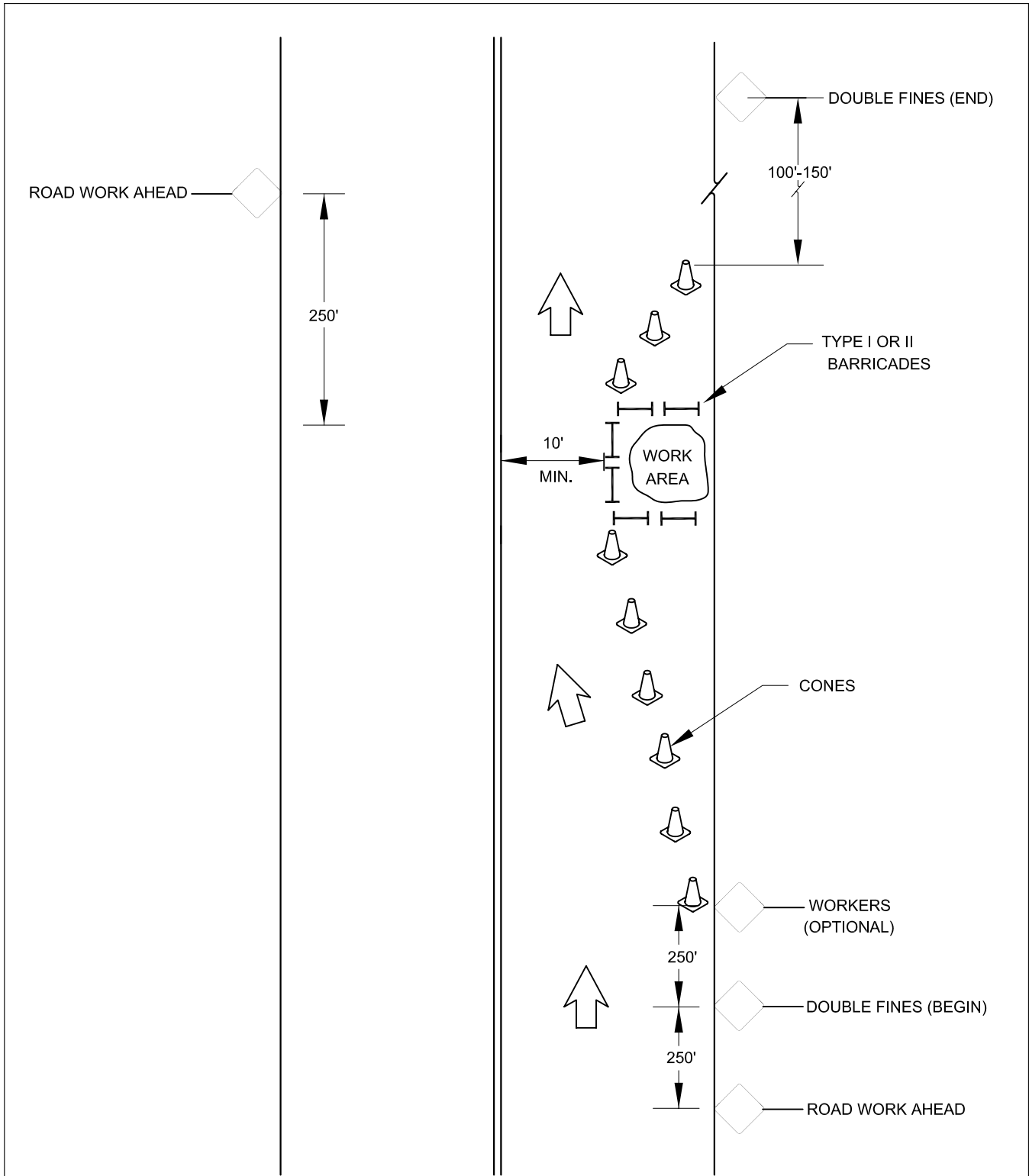


CITY
of
ARVADA

**LANE CLOSURE ON NEAR
SIDE OF INTERSECTION
HIGH VOLUME STREET**

approved
date: 3/6/03 | scale: NTS | dwn: D.D.V. | sht:

TRAFFIC AND TRANS. DIV. OF PUBLIC WORKS DEPT.



H:\DWGS\SPCS\TRAFFIC\TC-10.DWG

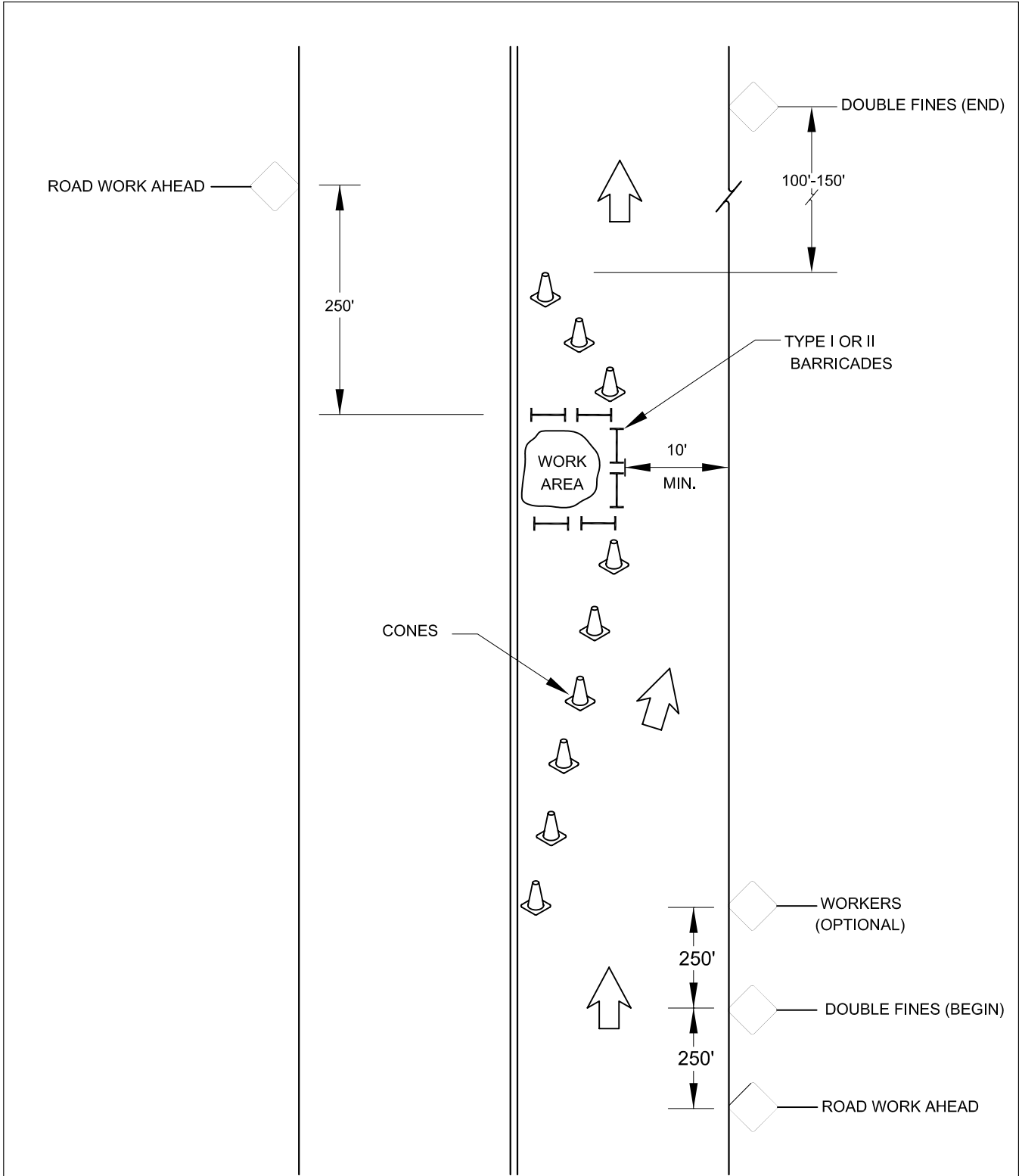
No.	Dwn.	Date.	Revision



**CLOSURE RIGHT SIDE OF ROADWAY
LOW VOLUME STREET**

approved
date: 3/11/03 | scale: NTS | dwn: D.D.V. | sht:

TRAFFIC AND TRANS. DIV. OF PUBLIC WORKS DEPT.



H:\DWGS\SPECS\TRAFFIC\TC-11.DWG

No.	Dwn.	Date.	Revision

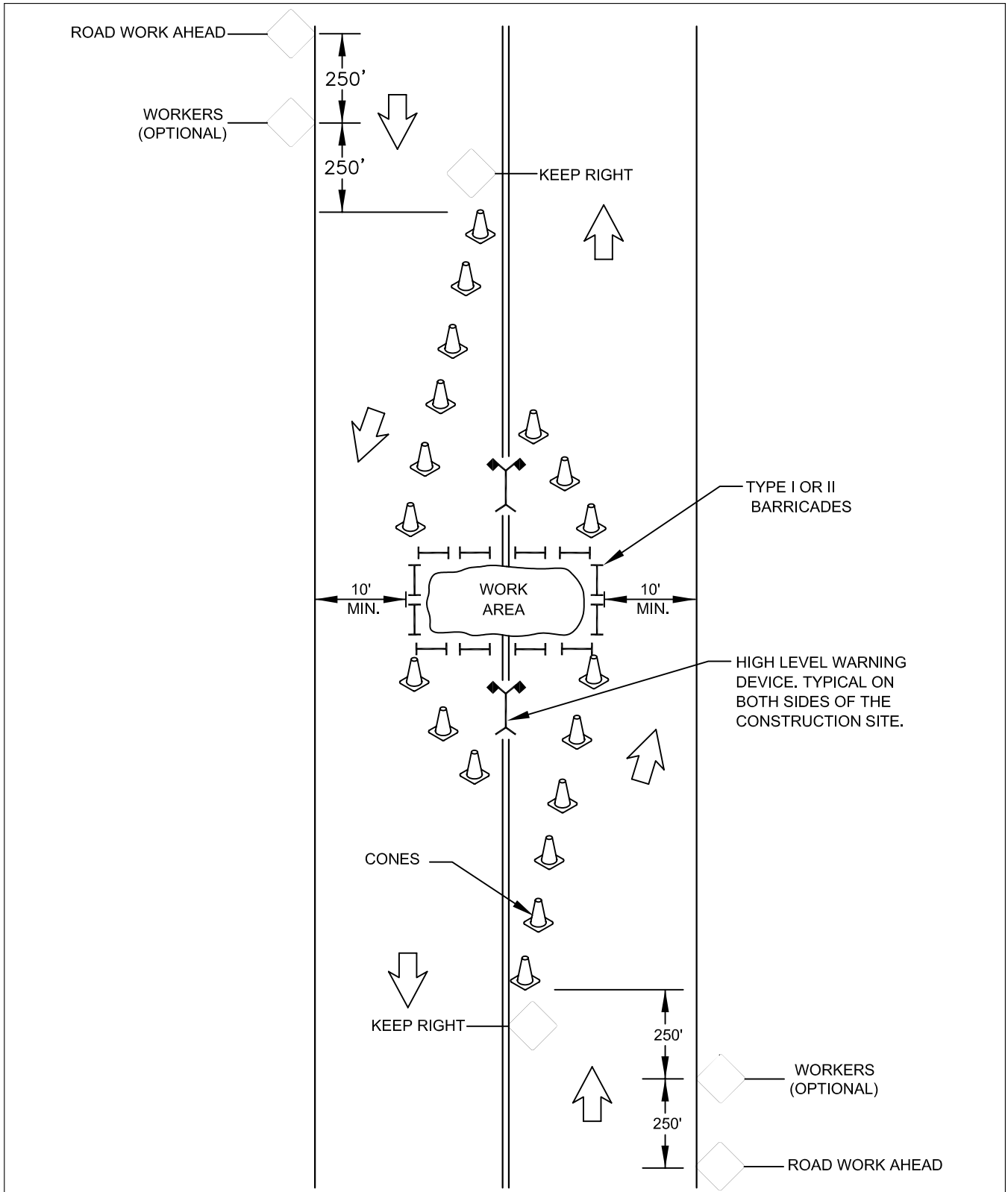


CITY
of
ARVADA

**CLOSURE LEFT SIDE OF ROADWAY
LOW VOLUME STREET**

approved _____
 date: 3/11/03 | scale: NTS | dwn: D.D.V. | sht: _____

TRAFFIC AND TRANS. DIV. OF PUBLIC WORKS DEPT.



H:\DWGS\SPCS\TRAFFIC\TC-12.DWG

No.	Dwn.	Date.	Revision

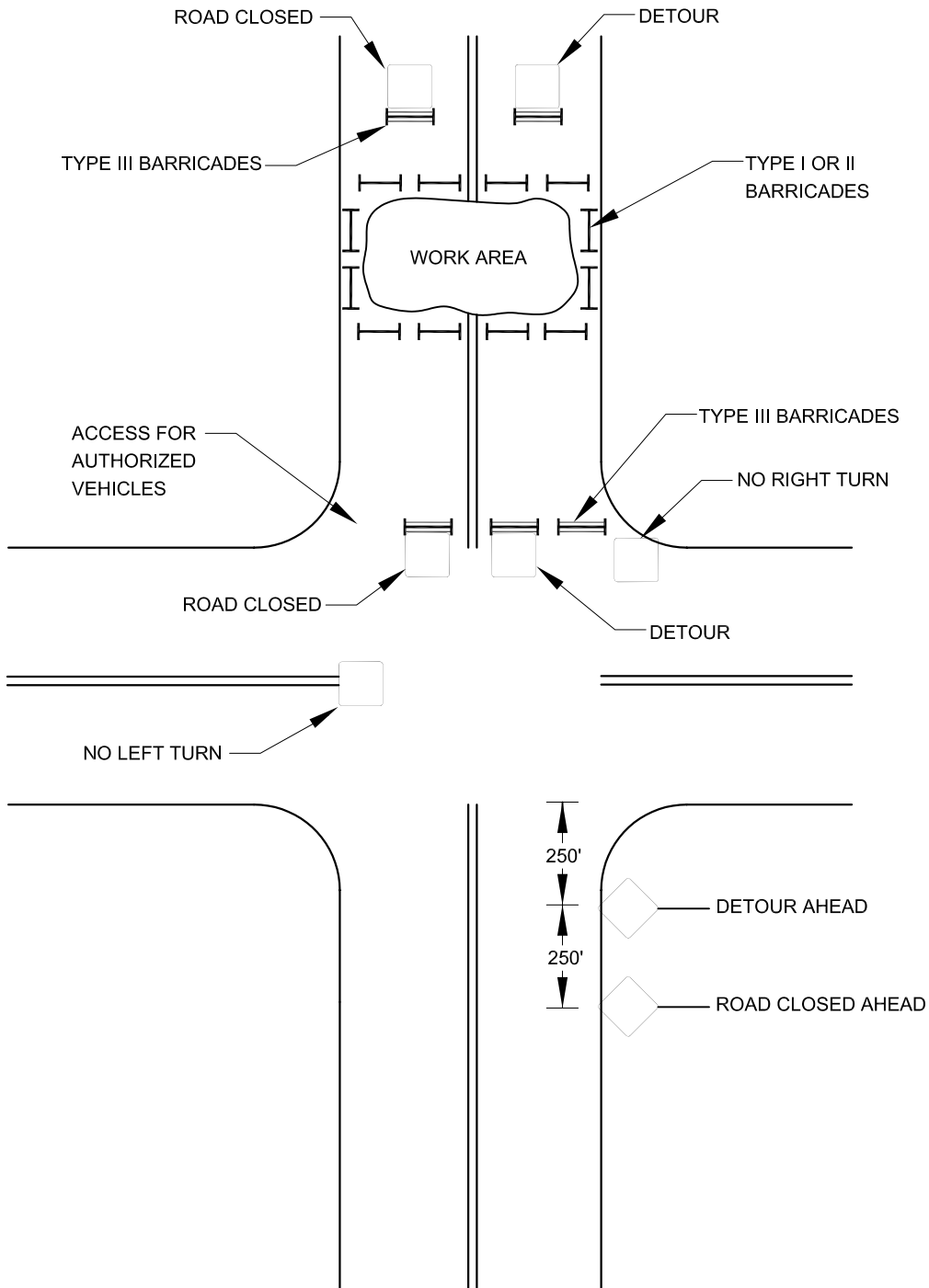


CITY
of
ARVADA

**CLOSURE CENTER OF ROADWAY
LOW VOLUME STREET**

approved
date: 3/11/03 | scale: NTS | dwn: D.D.V. | sht:

TRAFFIC AND TRANS. DIV. OF PUBLIC WORKS DEPT.



H:\DWGS\SPCS\TRAFFIC\TC-13.DWG

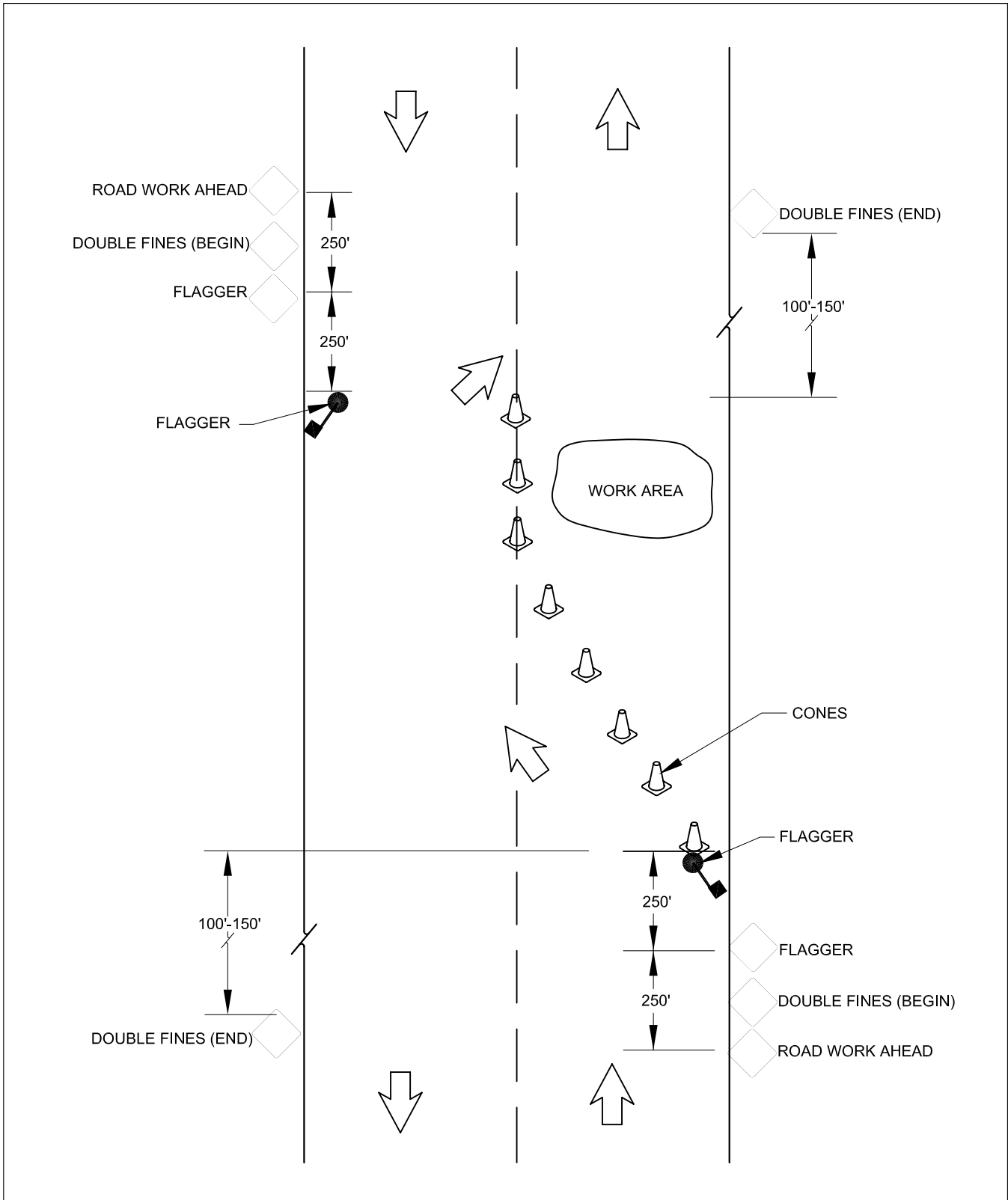
No.	Dwn.	Date.	Revision



**COMPLETE CLOSURE OF ROADWAY
LOW VOLUME STREET**

approved
date: 3/11/03 | scale: NTS | dwn: D.D.V. | sht:

TRAFFIC AND TRANS. DIV. OF PUBLIC WORKS DEPT.



H:\DWGS\SPCS\TRAFFIC\TC-14.DWG

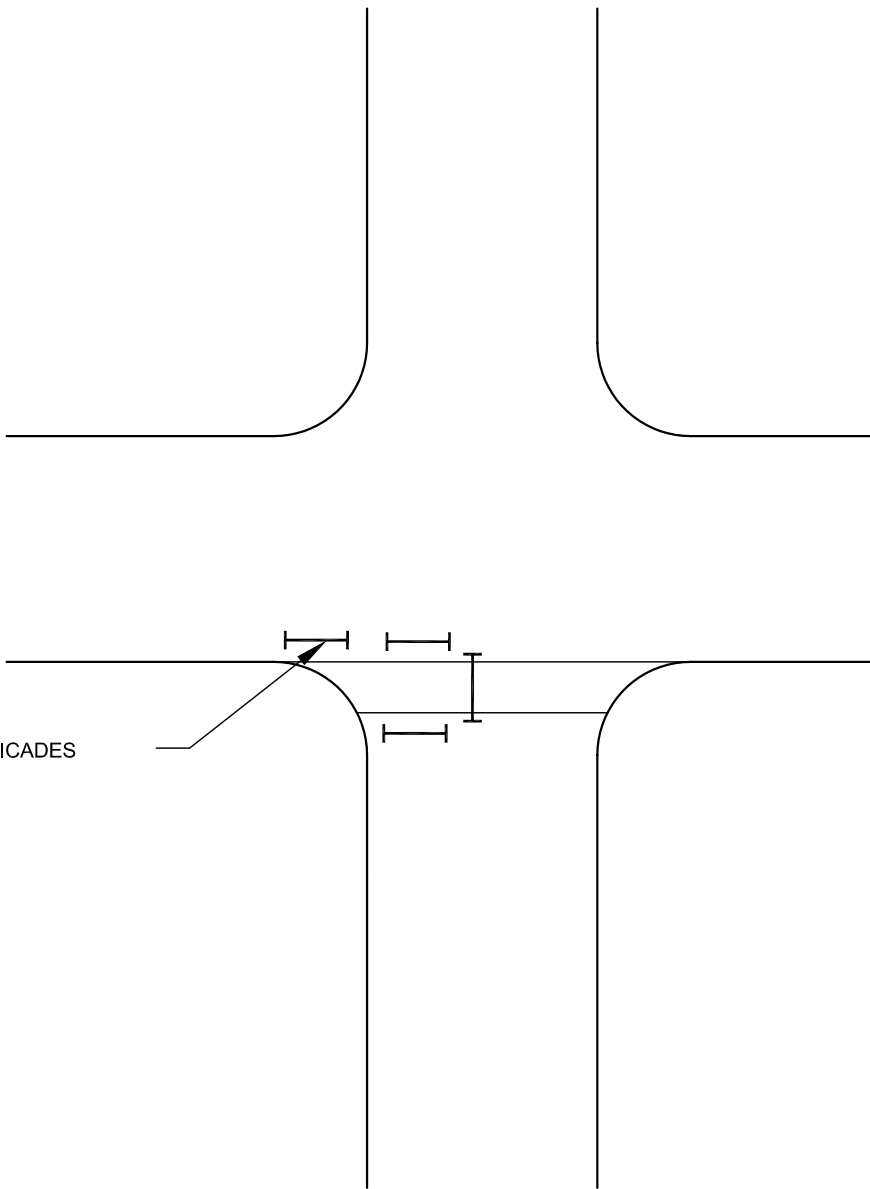
No.	Dwn.	Date.	Revision



**LANE CLOSURE WITH FLAGGER
LOW VOLUME STREET**

approved
 date: 3/11/03 | scale: NTS | dwn: D.D.V. | sht:

TRAFFIC AND TRANS. DIV. OF PUBLIC WORKS DEPT.



TYPE I BARRICADES

H:\DWGS\SPCS\TRAFFIC\TC-16.DWG

No.	Dwn.	Date	Revision

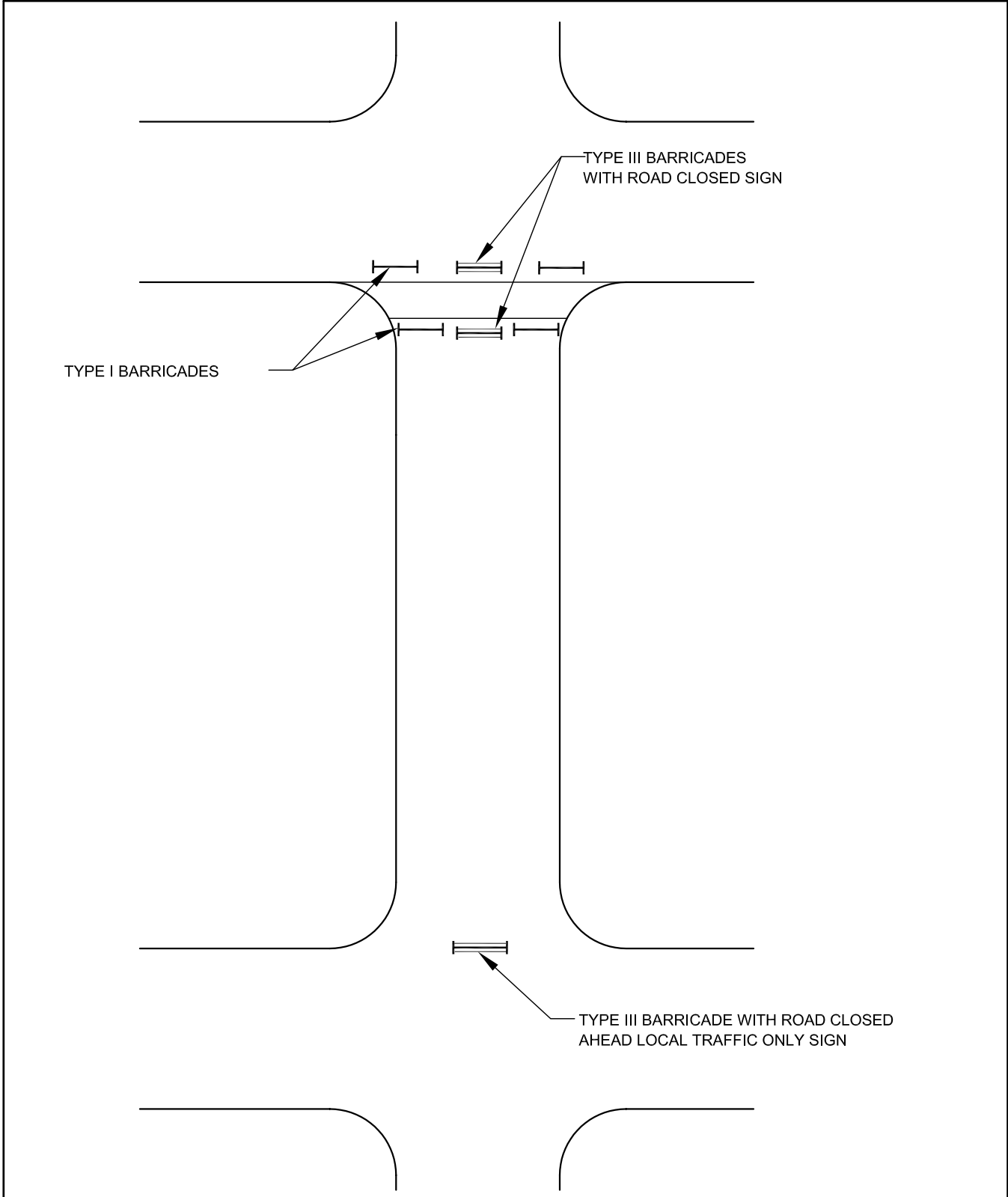


CITY
of
ARVADA

HALF CLOSURE - CONCRETE REPLACEMENT
LOW VOLUME STREET

approved
date: 3/11/03 | scale: NTS | dwn: D.D.V. | sht:

TRAFFIC AND TRANS. DIV. OF PUBLIC WORKS DEPT.



TYPE I BARRICADES

TYPE III BARRICADES
WITH ROAD CLOSED SIGN

TYPE III BARRICADE WITH ROAD CLOSED
AHEAD LOCAL TRAFFIC ONLY SIGN

H:\DWGS\SPCS\TRAFFIC\TC-17.DWG

No.	Dwn.	Date	Revision

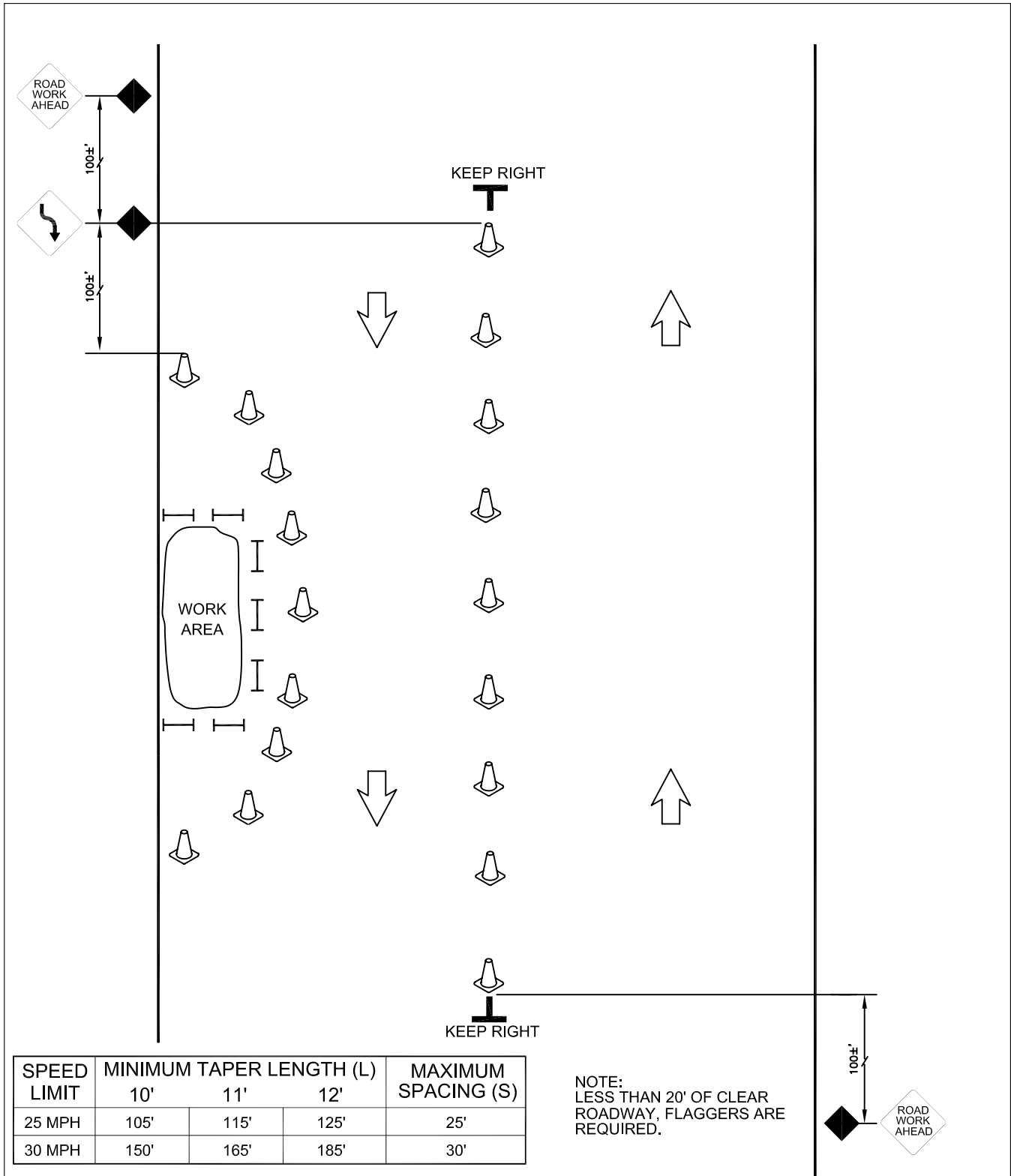


CITY
of
ARVADA

**FULL CLOSURE - CONCRETE REPLACEMENT
LOW VOLUME STREET**

approved _____
date: 3/11/03 | scale: NTS | dwn: D.D.V. | sht: _____

TRAFFIC AND TRANS. DIV. OF PUBLIC WORKS DEPT.



SPEED LIMIT	MINIMUM TAPER LENGTH (L)			MAXIMUM SPACING (S)
	10'	11'	12'	
25 MPH	105'	115'	125'	25'
30 MPH	150'	165'	185'	30'

NOTE:
LESS THAN 20' OF CLEAR
ROADWAY, FLAGGERS ARE
REQUIRED.

H:\DWGS\SPCS\TRAFFIC\TC-???.DWG

No.	Dwn.	Date.	Revision



CITY
of
ARVADA

TRAFFIC CONTROL
LOW VOLUME STREET
WITH NO CENTERLINE

approved
date: 10/1/06 | scale: NTS | dwn: D.D.V. | sht:

TRAFFIC AND TRANS. DIV. OF PUBLIC WORKS DEPT.